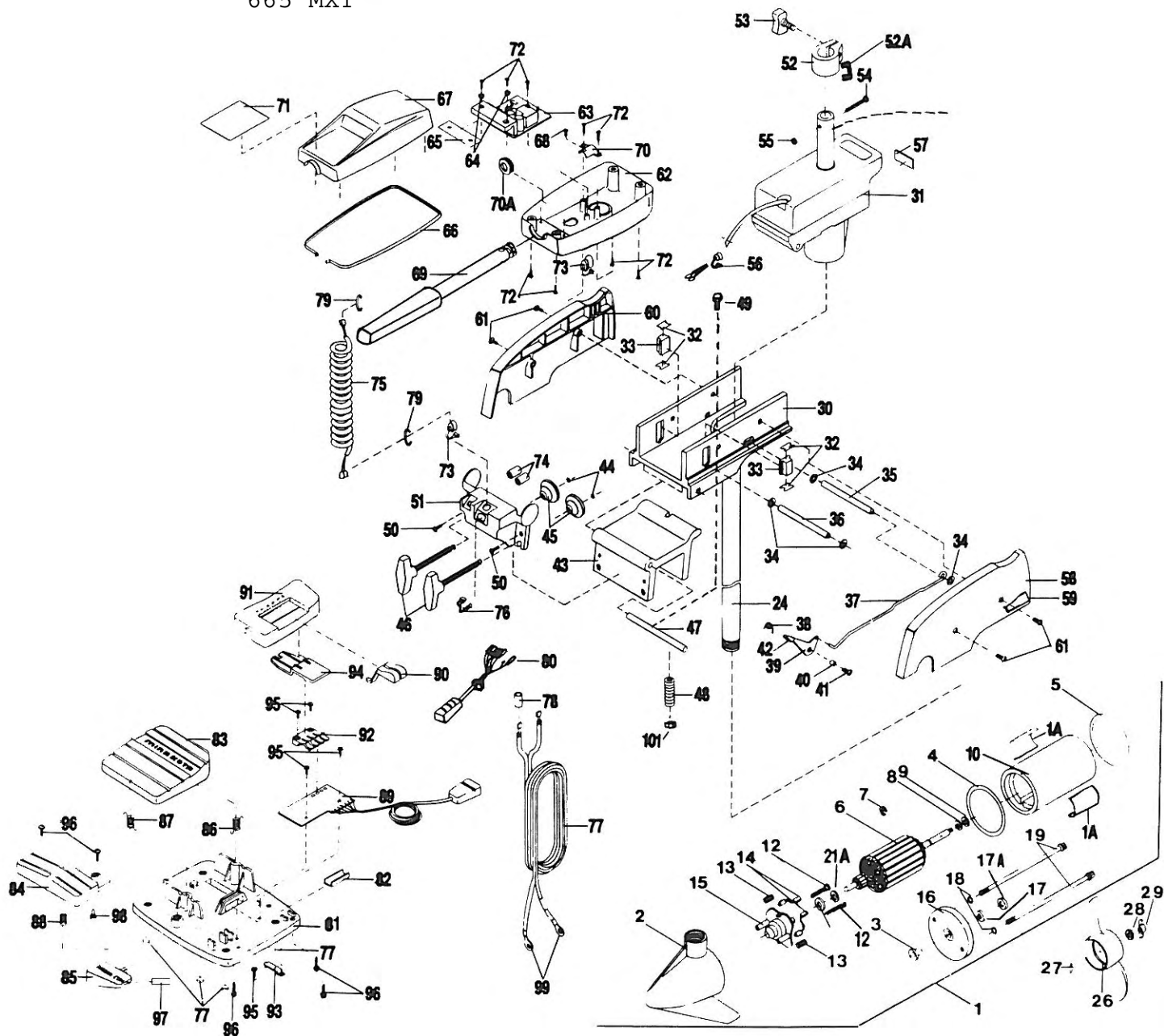


PARTS DIAGRAM

665 MXT



Model 665MXTa

REPLACEMENT PARTS

In the U.S.A., replacement parts may be ordered from the Minn Kota Parts Dept., Johnson Fishing, Inc., 1531 E. Madison Ave., Mankato, MN 56001. In Canada, parts may be ordered from any of the Canadian Authorized Service Centers shown on the enclosed list. Be sure to provide the MODEL and SERIAL numbers of your motor when ordering parts and please use the correct part Numbers from the Parts List. Payment for parts ordered from the Minn Kota Parts Dept. may be by cash, check, MasterCard, Visa card, or UPS C.O.D. Please add \$3.00 for postage and handling on all orders. Minimum charge \$3.00.

Item No.	Part No.	Description	Item No.	Part No.	Description
1	206-9026	Motor Assembly-Complete (42", 48")	52A	203-2800	Tension Block
1A	206-6641	Decal-Motor (2 req'd.)	53	201-1365	Collar Screw
2	406-022	Front Endbell	54	233-1303	Screw
3	406-600	Flange Bearing	55	233-3101	Hex Nut
4	406-480	Gasket	56	230-2935	Strain Relief
5	406-460	O-Ring	57	230-5521	Decal-Steering Motor
6	406-205	Armature	58	235-3800	Sideplate-Left
7	405-300	E-Ring	59	235-5505	Decal-Sideplate (2 req'd.)
8	406-170	Steel Washer	60	235-3900	Sideplate-Right
9	405-171	Thrust Washer	61	230-3430	Screw (4 req'd.)
10	406-254	Center Section w/Magnets	62	216-2544	Control Box
12	406-341	Brush Plate Screw (2 req'd.)	63	235-4021	Control Board Assembly
12A	406-090	Brushholder	64	230-1710	Washer-Insulating (2 req'd.)
13	406-081	Brush Spring (2 req'd.)	65	236-5105	Insulating Pad
14	406-070	Brush (2 req'd.)	66	206-6931	Gasket-Cover
15	406-402	Brush Plate w/Bearing	67	206-0251	Control Box Cover
16	406-032	Rear Endbell	68	235-3402	Screw
17	406-461	Seal (1 req'd.)	69	235-0901	Handle Assembly
17A	406-471	Cup Seal	70	235-0030	Handle Stop
18	401-462	Thru Bolt O-Ring (2 req'd.)	70A	201-0010	Outer Handle Bearing
19	406-351	Thru Bolt (2 req'd.)	71	235-5635	Decal-Cover
21A	406-010	Ball Bearing	72	201-2100	Screw (9 req'd.)
21B	401-050	Thrust Disc	73	233-2900	Strain Relief (2 req'd.)
25	203-2053	Tube—42"	74	235-5410	Shrink Tube (2 req'd.)
25A	203-2054	Tube—48" (Optional)	75	235-1201	Coil Cord
26	206-1125	Propeller	76	201-2910	Strain Relief
27	209-2600	Drive Pin	77	235-0600	Lead Wire (Includes Battery Terminals)
28	205-1700	Prop Washer	78	206-5400	Wire Insulator (Lg.)
29	205-3100	Prop Nut	79	230-3001	Pig Ring (2 req'd.)
30	235-1902	Hinge Base	80	235-0701	Control Cord
31	230-1830	Drive Housing	81	230-4510	Foot Pedal Base
32	230-5110	Pivot Pad Support (4 req'd.)	82	230-8500	Wear Plate
33	230-5100	Pivot Pad (2 req'd.)	83	230-4516	Foot Pedal-Upper
34	201-3110	Speed nut (4 req'd.)	84	230-4520	Foot Pedal-Lower
35	230-0500	Latch Pin	85	230-7210	Lever-Mom/Con
36	230-0510	Pivot Pin	86	230-2730	Spring-Long/Upper Pedal
37	235-3600	Release Rod	87	230-2731	Spring-Short/Upper Pedal
37A	230-3110	Push Nut	88	230-2732	Spring-Lower Pedal
38	230-2700	Spring	89	230-4012	Control Board Assembly
39	230-3700	Release Lever	90	230-0120	Knob-Speed Selector
40	230-1700	Spacer-Release Lever	91	230-0121	Housing-Speed Selector
41	230-3430	Screw	92	230-2840	Actuator-Board
42	230-0100	Release Lever Knob	93	230-2841	Actuator-Mom/Con
43	235-1912	Hinge Bracket	94	230-2842	Actuator-Steering
44	201-3010	Retaining Ring(2 req'd.)	95	230-2100	Screw #6-20 x 1/2 (5 req'd.)
45	201-1710	Clamp Screw Washer (2 req'd.)	96	237-2100	Screw #8-18 x 5/8 (5 req'd.)
46	201-1375	Clamp Screw (2 req'd.)	97	230-6601	Decal Mom/Con Lever
47	235-0500	Hinge Pin	98	233-5130	Bumper-Actuator
48	235-1500	Adjusting Spacer (9 req'd.)	99	209-0700	Ring Terminal (2 req'd.)
49	235-2100	Screw	100	299-4802	Bag Assembly
50	235-3401	Screw (2 req'd.)	*100A	230-5131	Rubber Bumper (6 req'd.)
51	235-6502	Front Housing	101	235-3100	Nut-Jam
52	200-1505	Collar Drive			

*This item is part of an assembly. This item cannot be sold separately due to machining and/or assembly that is required.