

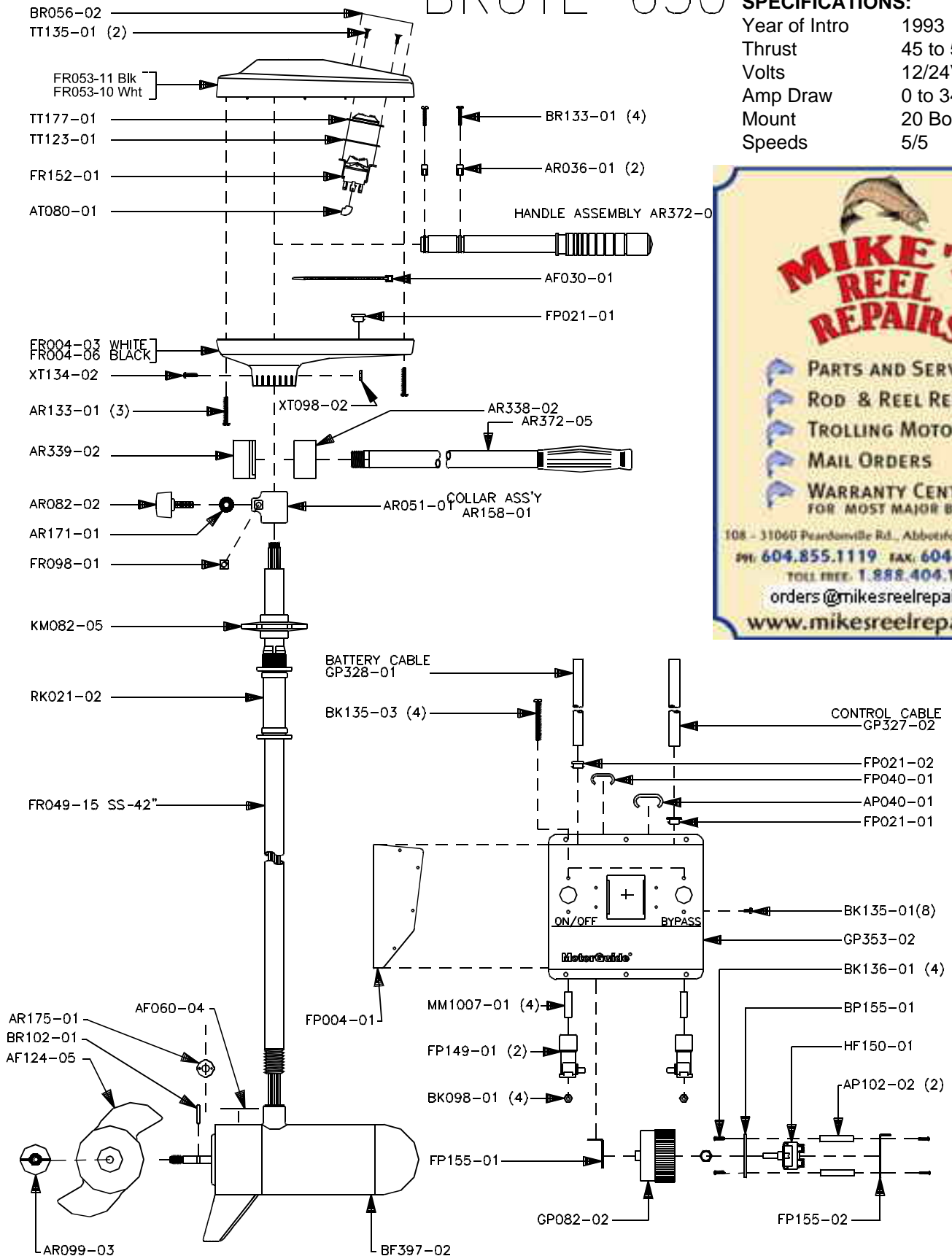
MotorGuide® REPAIR PARTS

Model:
650

BRUTE 650

SPECIFICATIONS:

| | |
|---------------|--------------|
| Year of Intro | 1993 |
| Thrust | 45 to 50LBS |
| Volts | 12/24VDC |
| Amp Draw | 0 to 34 amps |
| Mount | 20 Bow |
| Speeds | 5/5 |



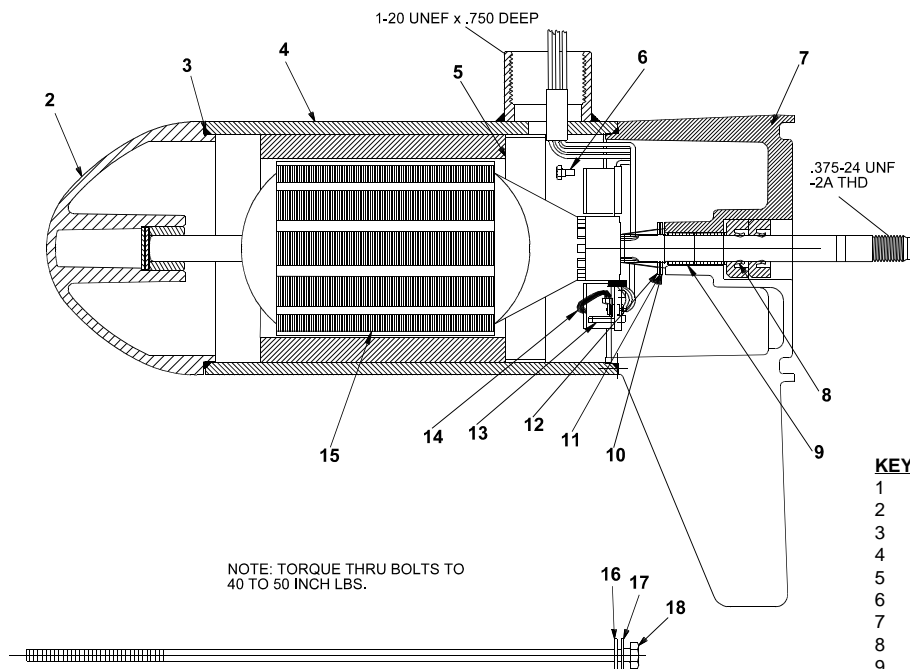
MIKE'S REEL REPAIRS

- PARTS AND SERVICE
- ROD & REEL REPAIRS
- TROLLING MOTORS
- MAIL ORDERS
- WARRANTY CENTRE FOR MOST MAJOR BRANDS

108 - 31060 Peardonville Rd., Abbotsford, BC V2T 6K5
 PH: 604.855.1119 FAX: 604-855.4090
 TOLL FREE: 1.888.404.1119
 orders@mikesreelrepair.com
 www.mikesreelrepair.com

LOWER UNIT BREAKDOWN

Model:
650



| KEY | QTY | DESCRIPTION | PART NO. |
|-----|-----|-----------------------|-----------|
| 1 | X | MOTOR | BF397-02 |
| 2 | 1 | NOSE CAP | JF3212-01 |
| 3 | 2 | O RING SEAL | MR217-01 |
| 4 | 1 | HOUSING ASY | JF3210-01 |
| 5 | 1 | RETAINER | JF233-01 |
| 6 | 2 | BRUSH CARD SCREW | MR228-01 |
| 7 | 1 | COMM CAP | BF3205-01 |
| 8 | 2 | SHAFT SEAL | MR223-01 |
| 9 | 1 | BEARING | MR206-01 |
| 10 | 1 | NYLATRON WASHER | MR226-01 |
| 11 | 1 | WASHER | MR227-01 |
| 12 | 1 | E RING | MR219-01 |
| 13 | 2 | BRUSH SPRINGS | MR214-02 |
| 14 | 1 | BRUSH ASY LESS SPRING | BF3201-01 |
| 15 | 1 | ARMATURE 3.5" | KF3207-01 |
| 16 | 4 | STATIC SEAL | MR222-01 |
| 17 | 4 | THRU BOLT WASHER | MR216-01 |
| 18 | 2 | THRU BOLT | MR218-02 |

WIRING

12/24V WIRING DIAGRAM

FOOT PEDAL

MOTOR TOP HOUSING

