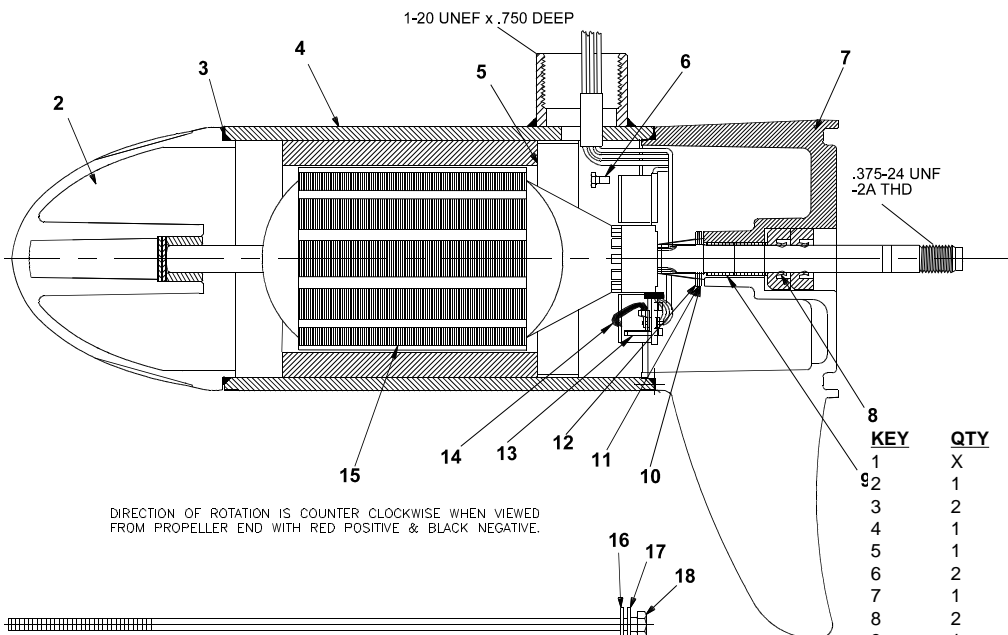




# LOWER UNIT BREAKDOWN

**Model:**  
**567**



NOTE: TORQUE THRU BOLTS TO 40 TO 50 INCH LBS.

| KEY | QTY | DESCRIPTION           | PART NO.  |
|-----|-----|-----------------------|-----------|
| 1   | X   | MOTOR                 | VF397-01  |
| 2   | 1   | NOSE CAP              | XF3212-01 |
| 3   | 2   | O RING SEAL           | MR217-01  |
| 4   | 1   | HOUSING ASY           | UF3210-01 |
| 5   | 1   | RETAINER              | JF233-01  |
| 6   | 2   | BRUSH CARD SCREW      | MR228-01  |
| 7   | 1   | COMM CAP              | VF3205-01 |
| 8   | 2   | SHAFT SEAL            | MR223-01  |
| 9   | 1   | BEARING               | MR206-01  |
| 10  | 1   | NYLATRON WASHER       | MR226-01  |
| 11  | 1   | WASHER                | MR227-01  |
| 12  | 1   | E RING                | MR219-02  |
| 13  | 2   | BRUSH SPRINGS         | MR214-02  |
| 14  | 1   | BRUSH ASY LESS SPRING | VF3201-01 |
| 15  | 1   | ARMATURE              | UF3207-01 |
| 16  | 4   | STATIC SEAL           | MR222-01  |
| 17  | 4   | THRU BOLT WASHER      | MR216-01  |
| 18  | 2   | THRU BOLT             | MR218-02  |

# WIRING

