

# 55 AT/MAXXXUM - OKADA

55lbs Thrust

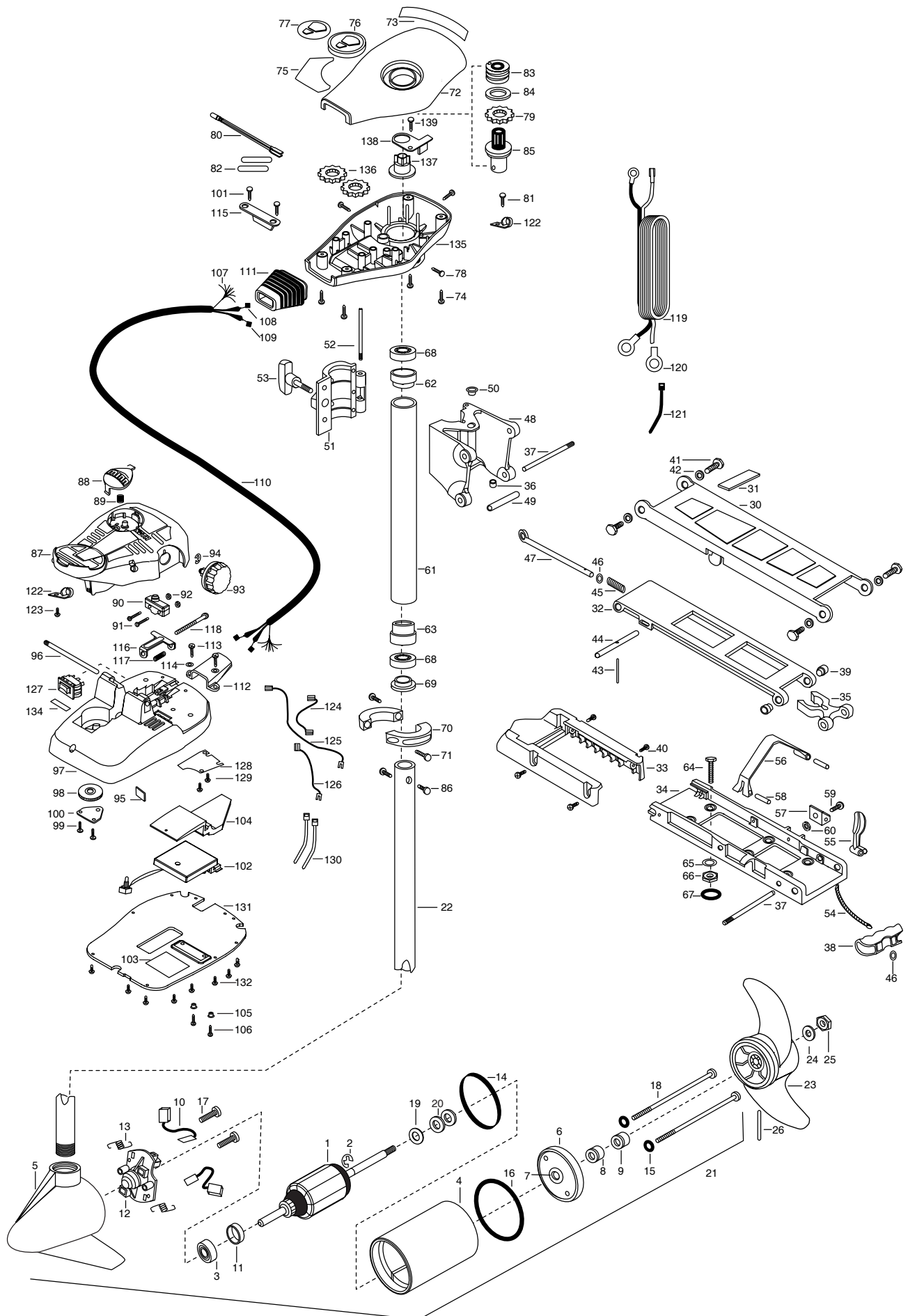
12 Volt

36" or 42" Shaft

For parts and service

call toll free: 1-888-404-1119

[www.mikesreelrepair.com](http://www.mikesreelrepair.com)



For parts and service

call toll free: 1-888-404-1119

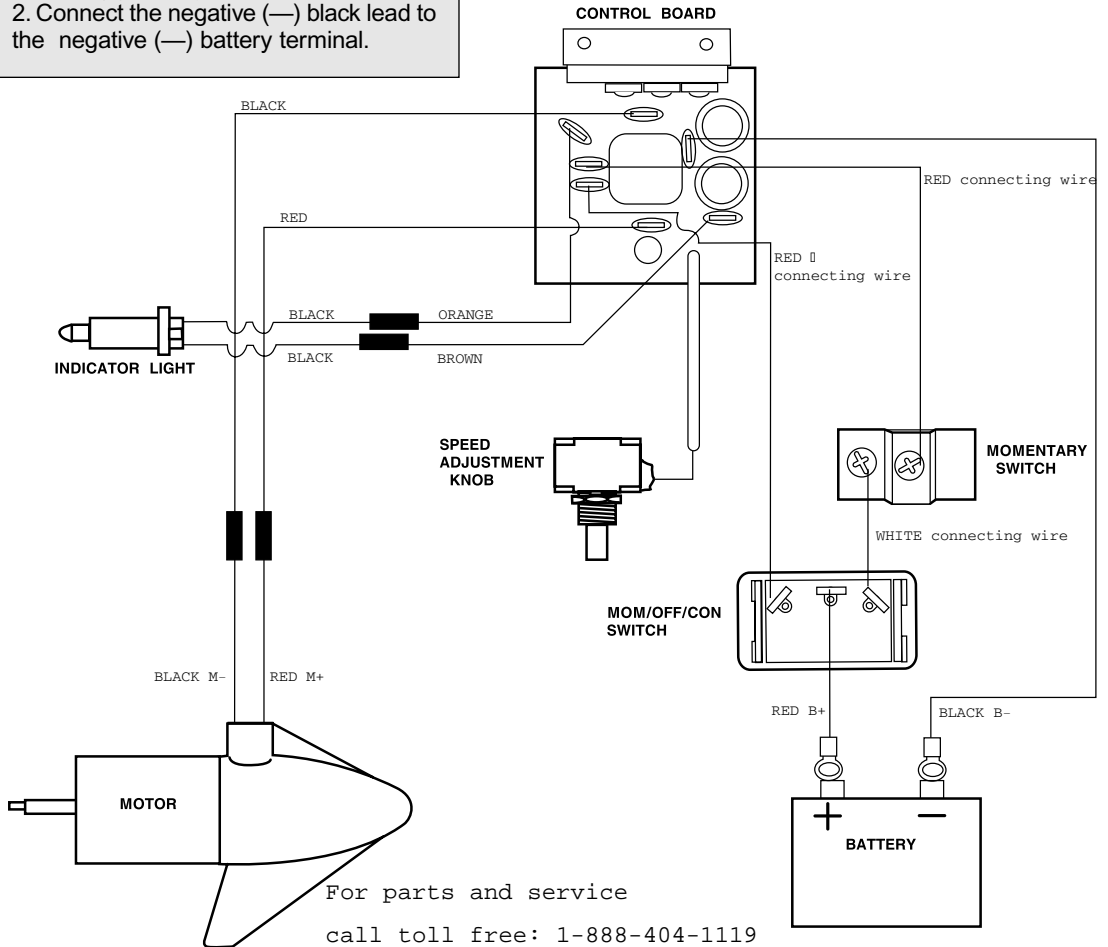
[www.mikesreelrepair.com](http://www.mikesreelrepair.com)

|    |            |                                      |     |         |                                    |     |         |                                     |
|----|------------|--------------------------------------|-----|---------|------------------------------------|-----|---------|-------------------------------------|
| 1  | 92-100-013 | ARMATURE ASSEMBLY 12V 3.625          | ■   | 2771812 | HINGE BASE W/EYLET-INSERT ASSEMBLY | 92  | 2233100 | NUT-SWITCH MOUNT [2.EA]             |
| 2  | 788-015    | RETAINING RING                       | 48  | 2261811 | HINGE BASE                         | 93  | 2260160 | KNOB-SPEED CONTROL (VAR)            |
| 3  | 140-010    | BEARING- BALL                        | 49  | 2231570 | SLEEVE ROLLER (HINGE BRACKET)      | 94  | 2263000 | E-RING TRU-ARC#5133-43              |
| 4  | 431-101    | HOUSING- CENTER ASSEMBLY 3.62 FW TXT | 50  | 2232350 | EYELET- ROPE                       | 95  | 2266413 | TENSION SCREW PLATE FTPDL           |
| 5  | 421-065    | HOUSING- BRUSH END 3.62 TXT          | 51  | 2261821 | HINGE DOOR-PAINTED F/W             | 96  | 2260511 | PIN-PIVOT A/T FT PDL                |
| 6  | 2-400-101  | PLAIN END HOUSING ASSEMBLY 3.62      | 52  | 2262640 | PIN-HINGE DOOR                     | 97  | 2774550 | FOOT PEDAL BASE/PIN ASSEMBLY        |
| 7  | 144-049    | BEARING -FLANGE                      | 53  | 2260183 | KNOB-HINGE COVER A/T FW            | 98  | 2262301 | PULLEY (FOOT PEDAL)                 |
| 8  | 880-003    | **SEAL                               | 54  | 2251600 | ROPE- (31")                        | 99  | 2223430 | SCREW- #8X3/4 PPH TYPE 25 SS [2.EA] |
| 9  | 880-006    | **SEAL W/SHEILD                      | 55  | 2267200 | LATCH LEVER                        | 100 | 2266400 | COVER-PULLEY (STAMPING)             |
| 10 | 188-036    | BRUSH ASSEMBLY 3.625 [2.EA]          | 56  | 2263800 | STRAP-HOLD DOWN                    | 101 | 2301310 | SCREW-8-18 X 1/2 SS [2.EA]          |
| 11 | 725-050    | PAPER TUBE- BRUSH RETENTION          | 57  | 2261910 | BRACKET- HOLD DOWN STRAP           | 102 | 2264006 | CONTROL BOARD ASSEMBLY-12V          |
| 12 | 738-036    | BRUSH PLATE W/HOLDER                 | 58  | 2260500 | PIN-ROLL LATCH LEVER [2.EA]        | 103 | 2365107 | INSULATING PAD 2.3 X 3.2            |
| 13 | 975-040    | SPRING- TORSION [2.EA]               | 59  | 2263440 | SCREW-10-24 X 3/4 SS               | 104 | 2264018 | HEAT SINK, MACH, MAX FT PD          |
| 14 | **337-036  | GASKET                               | 60  | 2333101 | NUT-HEX 10-24 UNC-28 NYLOCK        | 105 | 2261712 | SHOULDER WASHER MAXXUM FT [2.EA]    |
| 15 | **701-008  | O-RING [2.EA]                        | ■   | 2772015 | TUBE W/BEARING RACE ASSEMBLY       | 106 | 2263447 | SCREW, 8-32 X 1" [2.EA]             |
| 16 | **701-081  | O-RING                               | *61 | 2272066 | TUBE OUTER 18" - 4 HOLES           | 107 | 2261219 | WIRE HARNESS AT & MAX               |
| 17 | 830-007    | SCREW- #8-32 [2.EA]                  | 62  | 2266260 | BEARING RACE-                      | 108 | 2267500 | CABLE ASSEMBLY-RIGHT (5')           |
| 18 | 830-042    | THRU BOLT10-32X8.83 [2.EA]           | 63  | 2266220 | BEARING RACE-STEEL                 | 109 | 2267510 | CABLE ASSEMBLY-LEFT (5')            |
| 19 | 990-067    | WASHER- STEEL THRUST                 | ■   | 2994803 | BAG ASSEMBLY-(BOLTS,NUTS,WASHERS)  | 110 | 2265430 | CABLE JACKET (5')                   |
| 20 | 990-070    | WASHER- NYLATRON [2.EA]              | *64 | 2153501 | BOLT-MOUNTING-3500 W/STG [4.EA]    | 111 | 2265110 | BOOT-CONTROL BOX                    |
| 21 | 2099094    | MOTOR ASSEMBLY 12V 3.62 VARS         | *65 | 2151726 | WASHER-5/16 STD SS [4.EA]          | 112 | 2265115 | BOOT-FOOT PEDAL BASE                |
| 22 | 2032062    | TUBE (COMP)W/CSK HOLE-36"            | *66 | 2153100 | NUT-5/16-L8NC MOUNTING [4.EA]      | 113 | 2372100 | SCREW-8-18 X 5/8 THD (SS) [2.EA]    |
|    | 2032063    | TUBE (COMP)W/CSK HOLE-42"            | *67 | 2301720 | WASHER-MOUNTING RUBBER [6.EA]      | 114 | 2261714 | WASHER-MAXXUM FT PDL [2.EA]         |
| ■  | 1378122    | PROP KIT                             | 68  | 2266000 | BEARING BALL-STEEL [2.EA]          | 115 | 2261900 | BRACKET-CONDUIT                     |
| 23 | 2091150    | PROPELLER W.WEDGE                    | 69  | 2266115 | BEARING CONE                       | 116 | 2263210 | BRACKET-CONDUIT ADJUSTMENT          |
| 24 | 2151726    | WASHER - 5/16 STD SS                 | 70  | 2261619 | COLLAR HALF-ZINC-2 PER [2.EA]      | 117 | 2262720 | SPRING-CONDUIT ADJUST               |
| 25 | 2053101    | NUT- PROP NYLOC 5/16                 | 71  | 2263452 | SCREW-1/4-20X3/4 [2.EA]            | 118 | 2263463 | SCREW-1/4-20 X 2" STL PPH           |
| 26 | 2092600    | PIN- DRIVE SS                        | 72  | 2260280 | CONTROL BOX COVER-BLK              | 119 | 2261232 | LEADWIRE (A/T VARIABLE) 80"         |
| ■  | 2991954    | STD-BOWMT FW 30,33,36AT              | 73  | 2265507 | DECAL- CNTRL BOX TOP/SIDE          | 120 | 2020700 | TERMINAL RING, 3/8" [2.EA]          |
| 30 | 2264221    | ARM-UPPER FW/STD                     | 74  | 2372100 | SCREW-8-18 X 5/8 THD SS [4.EA]     | 121 | 2256300 | TIE WRAP-5.5" BLACK                 |
| 31 | 2265120    | BUMPER (UPPER ARM)                   | 75  | 2265625 | DECAL COVER, 55AT/MAXXUM           | 122 | 2263201 | CLAMP WIRE HARNESS MICRO [2.EA]     |
| 32 | 2774310    | ARM-LOWER ASSEMBLY                   | 76  | 2260150 | POINTER DISC TRNSLCNT RED          | 123 | 2332103 | SCREW-6-20 X 3/8 THD SS             |
| 33 | 2263900    | MOTOR REST- (565 TURBO)              | 77  | 2265800 | DECAL-INDICATOR                    | 124 | 2260316 | CONNECTING WIRE (VAR.SPD)           |
| 34 | 2251942    | BOW PLATE-D/C                        | 78  | 2053414 | SCREW-#8-32 X 1/2 TRI-LOBE [3.EA]  | 125 | 2260312 | WIRE,BLK W/WHT STRIPE 19 1/4        |
| 35 | 2293801    | TUBE LOCK- "B"                       | 79  | 2267800 | GEAR-INDICATOR                     | 126 | 2260323 | WIRE,BLK W/GRN STRIPE VARIABLE      |
| 36 | 2264705    | INSERT-HINGE BASE (STD MT)           | 80  | 2264015 | LIGHT/INDICATOR                    | 127 | 2254031 | SWITCH-MOM/OFF/CON                  |
| 37 | 2260506    | HINGE-PIN (HEADLESS) ZINC [2.EA]     | 81  | 2301310 | SCREW-8-18 X 1/2 SS                | 128 | 2266412 | SWITCH PLATE, FT PEDAL              |
| 38 | 2150400    | PULL-GRIP                            | 82  | 2355410 | SHRINK TUBE-3/8 OD X 2" [2.EA]     | 129 | 2332103 | SCREW-6-20 X 3/8 THD SS [2.EA]      |
| 39 | 2236000    | BEARING NYLINER [2.EA]               | 83  | 2232360 | PULLEY-CABLE DRUM                  | 130 | 2256301 | TIE WRAP-5.5" WHITE [2.EA]          |
| 40 | 2303431    | SCREW 1/4-20X5/8" PPH [4.EA]         | 84  | 2261730 | WASHER-NYLON A/T CON B             | 131 | 2266414 | BOTTOM PLATE, MAXXUM FT             |
| 41 | 2293511    | BOLT-UPPER ARM (W/LOCTITE) [4.EA]    | 85  | 2996246 | TOP BEARING RACE/PINION ASSEMBLY   | 132 | 9953104 | SCREW-8 X 1/2" SS [8.EA]            |
| 42 | 2293500    | BUSHING-SHOULDER (UPPER ARM) [4.EA]  | 86  | 2263410 | SCREW-8-32 X 5/16 (ZN PL) [2.EA]   | 134 | 2266610 | DECAL-ON/OFF SWITCH                 |
| 43 | 2152610    | SPRING-PIN (LOCKBAR)                 | 87  | 2790002 | FOOT PEDAL/PLUG ASSEMBLY (AT)      | 135 | 2262535 | CONTROL BOX-PLASTIC A/T's           |
| 44 | 2233600    | LOCK BAR- (BOW MOUNT)                | 88  | 2263700 | PUSH-BUTTON FOOT PEDAL             | 136 | 2267800 | GEAR INDICATOR [2.EA]               |
| 45 | 2152700    | SPRING-(LOCKBAR) CAD.PLT             | 89  | 2302732 | SPRING-LOWER PEDAL SS              | 137 | 2262220 | INDICATOR-DRIVE                     |
| 46 | 2151700    | WASHER-EYE SHAFT(.562 OD) [2.EA]     | 90  | 2264023 | SWITCH-SEALED ASSEMBLY             | 138 | 2261905 | BRACKET/INDICATOR                   |
| 47 | 2153600    | EYE SHAFT-CAD.PLATE                  | 91  | 2262114 | SCREW-MOUNTING/SWITCH [2.EA]       | 139 | 2301310 | SCREW-8-18 X 1/2 SS                 |

**\*\*Seal & Oring Kit P/N 2888460** \* This item is part of an assembly. This item cannot be sold separately due to machining and /or assembly that is required.

P/N 2264949 REV.A 11-00

1. Connect the positive (+) red lead to the positive (+) battery terminal.
2. Connect the negative (—) black lead to the negative (—) battery terminal.



For parts and service  
call toll free: 1-888-404-1119

[www.mikesreelrepair.com](http://www.mikesreelrepair.com)