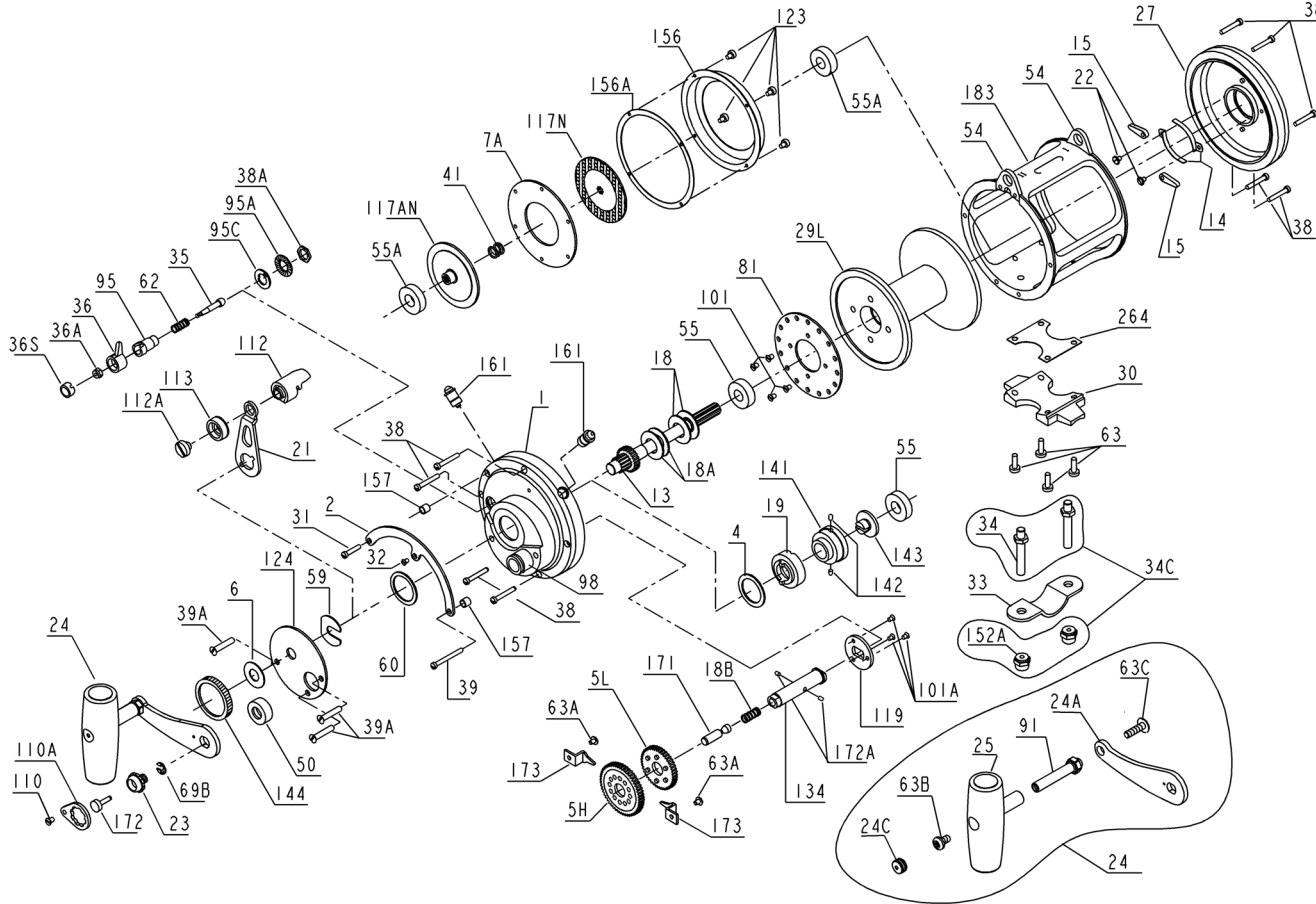




PARTS LIST FOR MODEL 50S AND 50SW



KEY NO.	DESCRIPTION	50S PART NO.	50SW PART NO.
24C	Handle Knob Cap	024C050	024C050
25	Handle Knob Assembly	025 050	025 050
27	L.S. Plate Assembly	027 050T	027 050T
29L	Spool	029L050S	029L050SW
30	Stand	030 050T	030 050T
31	Short Quadrant Screw	031T020	031 T20
32	Center Quadrant Screw	032T020	032T020
33	Rod Clamp	033 114	033 114
*	Ringed Rod Clamp (Optional)	033R114	033R114
34	Clamp Screw (2 req.)	034 050T	034 050T
34C	Rod Clamp Screw w/Nut	034C050T	034C050T
35	Click Tongue	035 080N	035 080N
36	Click Button	036N050	036N050
36A	Click Button Nut	036 700	036 700
36S	Click Button Cap	036S080ST	036S080ST
38	Frame Screw (9 req.)	038T050	038T050
38A	Click Bushing Nut	038 710	038 710
39	Long Quadrant Screw	039T050	039T050
39A	Bridge Cover Screw (3 req.)	039A080S	039A080S
41	L.S. Bearing Spring	041 050S	041 050S
*	Cam Housing Screw (2 req.)	046A704	046A704
50	Gear Stud Cover	050 025	050 025
54	Harness Lug (2 req.)	054 050T	054 050T
55	Ball Bearing (2 req.)	055 050	055 050
55A	Ball Bearing (2 req.)	055 080	055 080
59	Slotted Washer	059 050	059 050
60	Backing Washer	060 050	060 050
62	Click Spring	062 050	062 050
63	Stand Screw (4 req.)	063 030T	063 030T
63A	Gear Retainer Screw (2 req.)	063 349	063 349
63B	Handle Screw	063 050	063 050
63C	Handle Screw	063A050	063A050
69B	Retaining Ring	069B050	069B050
81	Ratchet	081 050	081 050
91	Handle Rivet	091N050	091N050
95	Click Tongue Bushing	095 080	095 080
95A	Click Bushing Washer	095A020	095A020
95C	Click Bushing Washer	095A050	095A050
98	Bridge Bushing	098 050SN	098 050SN
101	Ratchet Plate Screw (4 req.)	101 030	101 030
101A	Coupling Plate Screw (3 req.)	101 050S	101 050S
110	Handle Lock Screw	110 050	110 050
110A	Locking Plate	110A050	110A050
112	Eccentric Lever Knob	112 050	112 050
112A	Eccentric Screw	112A050	112A050
113	Eccentric Lever Cap	113 050	113 050
117N	Outer Drive Plate Assembly	117N050S	117N 050S
117AN	Inner Drive Plate Assembly	117AN050S	117AN050S
119	Coupling Plate	119 030S	119 030S
123	Drag Cover Screw (4 req.)	123 050	123 050
124	Bridge Cover	124 050	124 050
*	Cam Housing	125 050S	125 050S
134	Gear Stud	134 050S	134 050S
141	Cam Follower	141 050	141 050
142	Cam Follower Pin (2 req.)	142 050	142 050
143	Adjusting Screw	143 050	143 050
144	Preset Knob	144 050	144 050
152A	Rod Clamp Acorn Nut (2 req.)	152A050T	152A050T
156	Drag Cover	156 050	156 050
156A	Drag Cover Seal	156A050	156A050
157	Quadrant Spacer (2 req.)	157 050	157 050
161	Locating Pin Assembly (2 req.)	161C070	161C070
171	Plunger	171 050S	171 050S
172	Plunger Cap	172 050S	172 050S
172A	Plunger Pin (2 req.)	172A050S	172A050S
173	Retainer, Gear (2 req.)	173 050S	173 050S
183	Tube Frame	183 050S	183 050SW
264	Stand Gasket	264 030T	264 030T

KEY NO.	DESCRIPTION	50S PART NO.	50SW PART NO.
1	Right-Side Plate Assembly	001 050SN	001 050SN
2	Quadrant	002 050	002 050
4	Cam Thrust Washer	004 050	004 050
5H	Main Gear High-Speed	005 050HS	005 050HS
5L	Main Gear Low-Speed	005 050LS	005 050LS
6	Spacer Washer	006 155	006 155
7A	Floating Drag Washer	007A 050S	007A 050S
13	Pinion Gear	013 050S	013 050SW
14	Dog Spring (2 req.)	014 050	014 050
15	Dog (2 req.)	015 050	015 050
18	Disc Clutch Spring (2 req.)	018 050W	018 050W
18A	Disc Clutch Spring (2 req.)	018 050TW	018 050TW
18B	Gear Stud Spring	018 349	018 349
19	Eccentric Cam	019 050W	019 050W
21	Eccentric Lever	021 050S	021 050S
22	Dog Spring Screw	022 109	022 109
23	Handle Screw	023 050S	023 050S
24	Handle Complete	024 050T	024 050T
24A	Handle Blank Only	024 050T-1	024 050T-1

*Not Shown