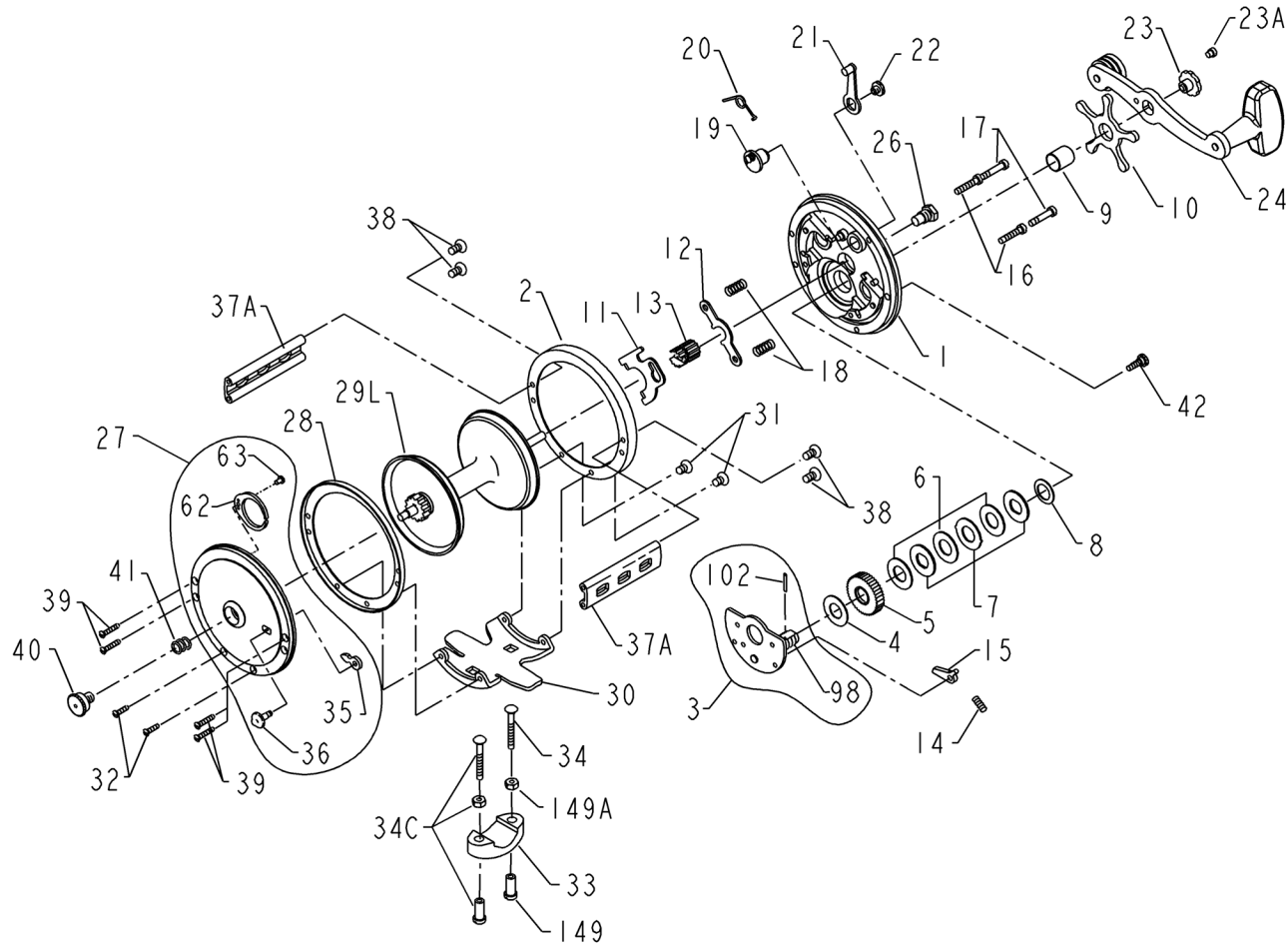




PARTS LIST FOR MODEL 500L



| <u>KEY NO.</u> | <u>PART NO.</u> | <u>DESCRIPTION</u> |
|----------------|-----------------|--------------------|
| 1 | 001 500 | Right Side Plate |
| 2 | 002 250 | Right Side Ring |
| 3 | 003 500S | Bridge Assembly |
| 4 | 004 060 | Fiber Washer |
| 5 | 005 500 | Main Gear |

| <u>KEY NO.</u> | <u>PART NO.</u> | <u>DESCRIPTION</u> |
|----------------|-----------------|---------------------------------|
| 6 | 006 309 | Drag Washer (3 req.) |
| 7 | 007C500 | Metal Washer Set |
| 8 | 008 060 | Tension Spring |
| 9 | 009 060 | Spacing Sleeve |
| 10 | 010 505 | Star Drag Wheel |
| 11 | 011 099 | Eccentric Jack |
| 12 | 012 500 | Pinion Yoke |
| 13 | 013 500 | Pinion |
| 14 | 014 500 | Dog Spring |
| 15 | 015 500 | Dog |
| 16 | 016 060CH | Lower Bridge Screw |
| 17 | 017 060CH | Upper Bridge Screw |
| 18 | 018 060 | Clutch Spring |
| 19 | 019 250 | Eccentric |
| 20 | 020 060L | Eccentric Spring |
| 21 | 021 066 | Eccentric Lever |
| 22 | 022 099 | Eccentric Screw |
| 23 | 023 060 | Handle Screw |
| 23A | 110 060 | Handle Lock Screw |
| 24 | 024 066 | Handle |
| 26 | 026 155 | Right Side Bearing |
| 27 | 027 500 | Left Side Plate Assembly |
| 28 | 028 250 | L.S. Ring (Inner) |
| 29L | 029L500 | Spool Assembly |
| 30 | 030 200 | Stand |
| 31 | 031 019 | Right Side Stand Screw (2 req.) |
| 32 | 032 016CH | Left Side Stand Screw (2 req.) |
| 33 | 033 113 | Rod Clamp |
| * | *033R200 | *Ringed Rod Clamp (Optional) |
| 34 | 034 045 | Clamp Screw |
| 34C | 034C045 | Rod Clamp Screw w/Nuts |
| 35 | 035 060 | Click Tongue |
| 36 | 036 060CH | Click Button |
| 37A | 037A500S | Spacer Bar |
| 38 | 038 007 | R.S. Spacer Screw (4 req.) |
| 39 | 039 005 | L.S. Spacer Screw (4 req.) |
| 40 | 040 060 | Left Side Bearing |
| 41 | 041 060 | Bearing Spring |
| 42 | 129 200 | Take Apart Thumb Screw |
| 62 | 062 500 | Spring, Click |
| 63 | 063 209 | #3 Pan Hd Screw |
| 98 | 098 505 | Gear Sleeve |
| 102 | 102 060 | Gear Sleeve Pin |
| 149 | 149 045 | Clamp Nut (2 req.) |
| 149A | 149 200 | Hex Nut (2 req.) |