

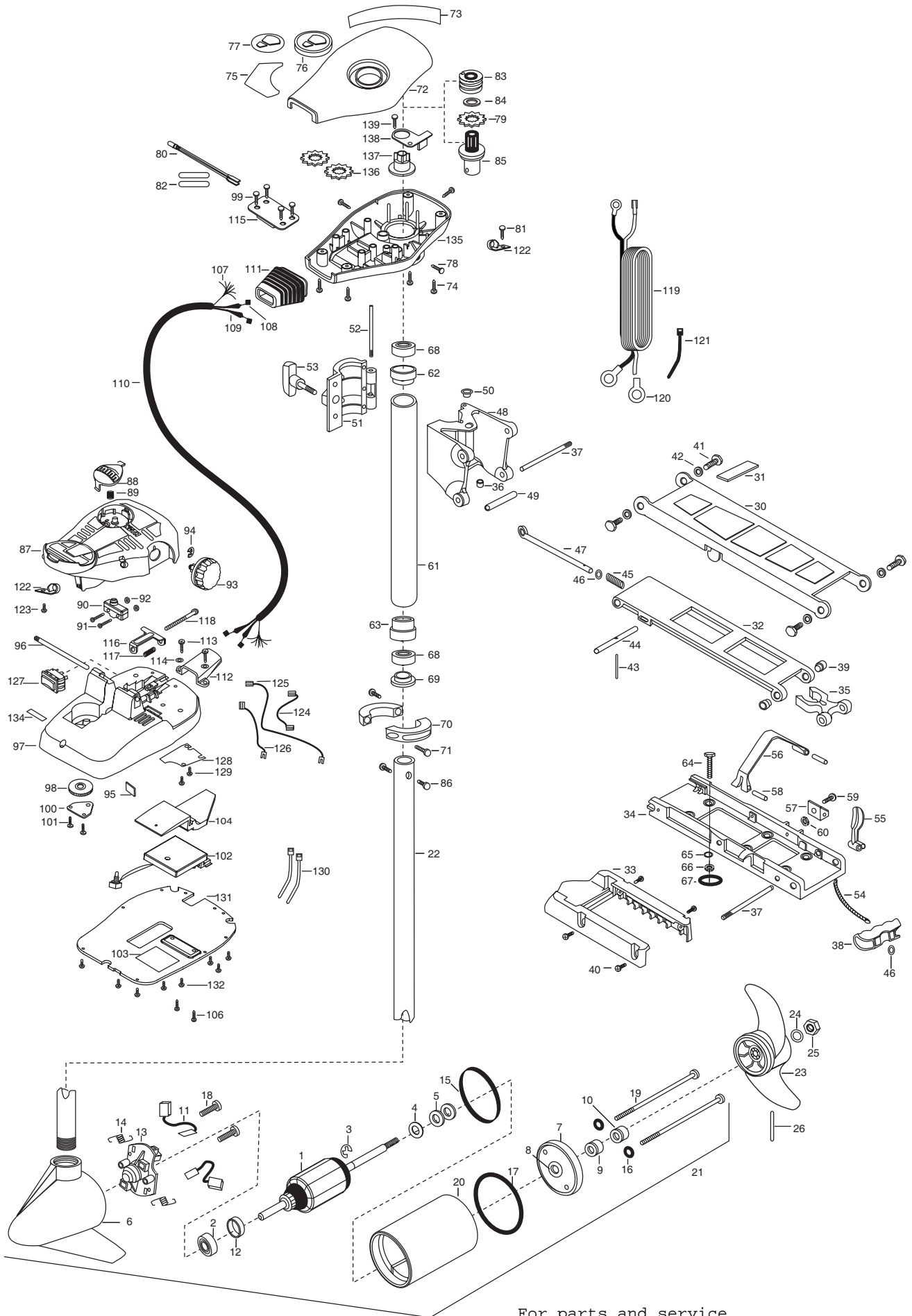
44AT/MAXXUM - OKADA

44lbs Thrust
12 Volt
36" or 42" Shaft

For parts and service

call toll free: 1-888-404-1119

www.mikesreelrepair.com



For parts and service

call toll free: 1-888-404-1119

www.mikesreelrepair.com

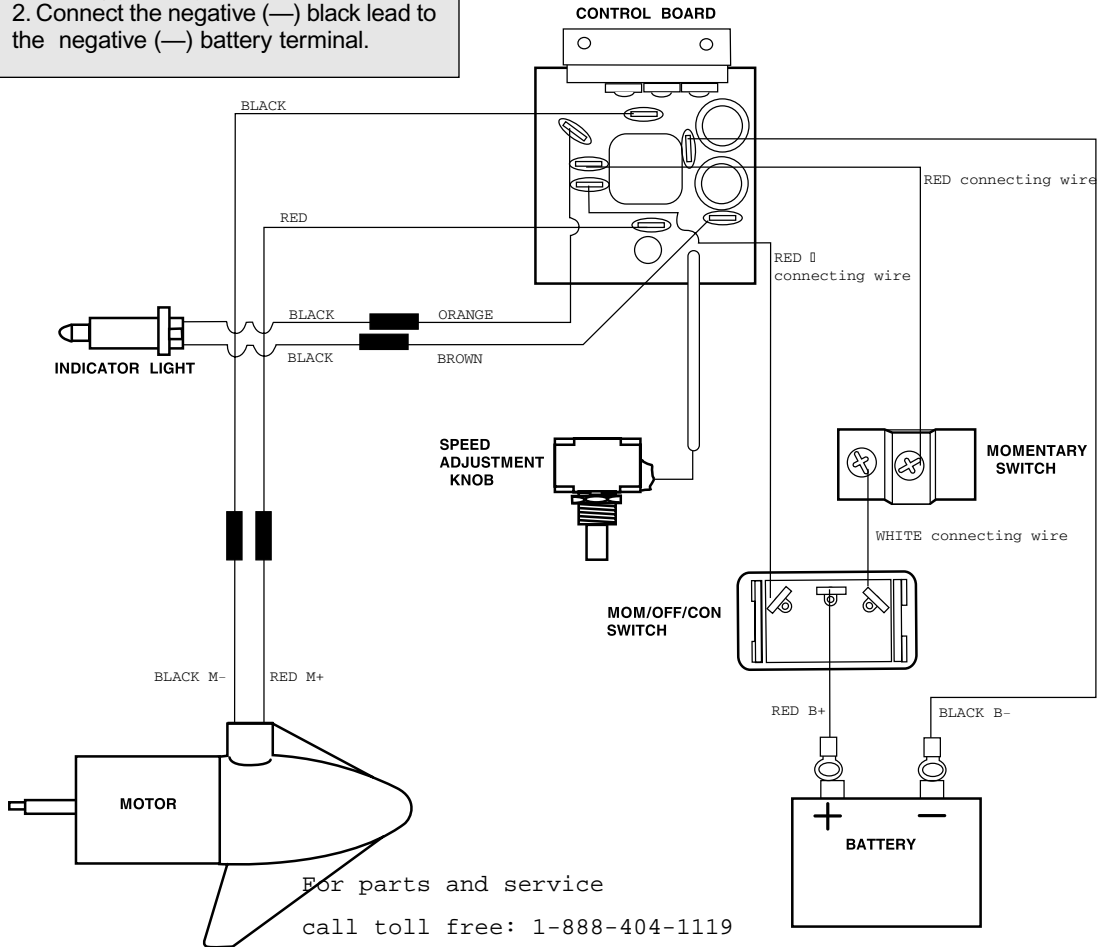
1	92-100-095	ARMATURE ASSEMBLY 12V 3.625	48	2261811	HINGE BASE	93	2260160	KNOB-SPEED CONTROL (VAR)
2	140-010	BEARING- BALL	49	2231570	SLEEVE ROLLER (HINGE BRACKET)	94	2263000	E-RING TRU-ARC#5133-43
3	788-015	RETAINING RING	50	2232350	EYELET- ROPE	95	2266413	TENSION SCREW PLATE FTPDL
4	990-067	WASHER- STEEL THRUST	51	2261821	HINGE DOOR-PAINTED F/W	96	2260511	PIN-PIVOT A/T FT PDL
5	990-070	WASHER- NYLATRON [2.EA]	52	2262640	PIN-HINGE DOOR	97	2774550	FOOT PEDAL BASE/PIN ASSEMBLY
6	421-065	BRUSH END HOUSING	53	2260183	KNOB-HINGE COVER A/T	98	2262301	PULLEY (FOOT PEDAL)
7	2-400-101	PLAIN END HOUSING ASSEMBLY	54	2251600	ROPE- (31")	99	2223430	SCREW-8X 3/4 PPH TYPE 25 SS [4.EA]
8	144-049	BEARING -FLANGE	55	2267200	LATCH LEVER	100	2266400	COVER-PULLEY (STAMPING)
9	880-003	**SEAL	56	2263800	STRAP-HOLD DOWN	101	2301310	SCREW-8-18 X 1/2 SS [2.EA]
10	880-006	**SEAL W/SHEILD	57	2261910	BRACKET- HOLD DOWN STRAP	102	2264006	CONTROL BOARD ASMBLY-12V MAX 44
11	188-036	BRUSH ASSEMBLY [2.EA]	58	2260500	PIN-ROLL LATCH LEVER [2.EA]	103	2365107	INSULATING PAD 2.3 X 3.2
12	725-050	BRUSH RETENTION	59	2263440	SCREW-10-24 X 3/4 SS	104	2264018	HEAT SINK, MACH, MAX FT PD
13	738-036	BRUSH PLATE W/HOLDER	60	2333101	NUT-HEX 10-24 UNC-28 NYLOCK	106	2263447	SCREW, 8-32 X 1" [2.EA]
14	975-040	SPRING- TORSION [2.EA]	■	2772015	TUBE W/BEARING RACE ASSEMBLY	107	2261219	WIRE HARNESS AT & MAX
15	337-036	**GASKET	*61	2272066	TUBE OUTER 18" - 4 HOLES	108	2267500	CABLE ASSEMBLY-RIGHT (5')
16	701-008	**O-RING [2.EA]	62	2266260	BEARING RACE	109	2267510	CABLE ASSEMBLY-LEFT (5')
17	701-081	**O-RING	63	2266220	BEARING RACE-STEEL	110	2265430	CABLE JACKET (5')
18	830-007	SCREW- SELF THREAD 8-32X1 [2.EA]	■	2994803	BAG ASSEMBLY-(BOLTS,NUTS,WASHERS)	111	2265110	BOOT-CONTROL BOX
19	830-042	THRU BOLT10-32X8.83 [2.EA]	*64	2153501	BOLT-MOUNTING-3500 W/STG [4.EA]	112	2265115	BOOT-FOOT PEDAL BASE
20	431-101	CENTER HOUSING FIELD ASSEMBLY	*65	2151726	WASHER-5/16 STD SS [4.EA]	113	2372100	SCREW-8-18 X 5/8 THD (SS) [2.EA]
21	2099063	MOTOR ASSEMBLY 12V 3.62 VARS	*66	2153100	NUT-5/16-L8NC MOUNTING [4.EA]	114	2261714	WASHER-MAXXUM FT PDL [2.EA]
22	2032062	TUBE (COMP)W/CSK HOLE-36"	*67	2301720	WASHER-MOUNTING RUBBER [6.EA]	115	2261901	BRACKET-CONDUIT
	2032063	TUBE (COMP)W/CSK HOLE-42"	68	2266000	BEARING BALL-STEEL [2.EA]	116	2263210	BRACKET-CONDUIT ADJUSTMENT
■	1378122	PROP KIT	69	2266115	BEARING CONE	117	2262720	SPRING-CONDUIT ADJUST
*23	2091150	PROPELLER W.WEDGE	70	2261619	COLLAR HALF-ZINC-2 PER [2.EA]	118	2263463	SCREW-1/4-20 X 2" STL PPH
*24	2151726	WASHER-5/16 STD SS	71	2263452	SCREW-1/4-20X3/4 [2.EA]	119	2261227	LEADWIRE (A/T VARIABLE)
*25	2053101	NUT- NYLOC 5/16 SS	72	2260280	CONTROL BOX COVER-BLK	120	2020700	TERMINAL RING, 3/8" [2.EA]
*26	2092600	PIN- DRIVE SS	73	2265507	DECAL- CNTRL BOX TOP/SIDE	121	2256300	TIE WRAP-5.5" BLACK
■	2991954	STD-BOWMT FW 30,33,36AT	74	2372100	SCREW-8-18 X 5/8 THD SS [4.EA]	122	2263201	CLAMP WIRE HARNESS MICRO [2.EA]
30	2264221	ARM-UPPER FW/STD,BWGRD	75	2265517	DECAL COVER, 44AT/MAXXUM	123	2332103	SCREW-6-20 X 3/8 THD SS
31	2265120	BUMPER (UPPER ARM)	76	2260150	POINTER DISC TRNSLCNT RED	124	2260316	CONNECTING WIRE (VAR.SPD)
32	2774310	ARM-LOWER ASSEMBLY	77	2265800	DECAL-INDICATOR	125	2260312	WIRE,BLK W/WHT STRP 19 1/4
33	2263900	MOTOR REST- (565 TURBO)	78	2053414	SCREW-#8-32 X 1/2 TRI-LOBE [3.EA]	126	2260323	WIRE,BLK W/GEN STP VARIABLE
34	2251942	BOW PLATE-D/C	79	2267800	GEAR-INDICATOR	127	2254031	SWITCH-MOM/OFF/CON
35	2293801	TUBE LOCK- "B"	80	2264015	LIGHT/INDICATOR	128	2266412	SWITCH PLATE, FT PEDAL
36	2264705	INSERT-HINGE BASE (STD MT)	81	2301310	SCREW-8-18 X 1/2 SS	129	2332103	SCREW-6-20 X 3/8 THD SS [2.EA]
37	2260506	HINGE-PIN (HEADLESS) ZINC [2.EA]	82	2355410	SHRINK TUBE-3/8 OD X 2" [2.EA]	130	2256301	TIE WRAP-5.5" WHITE [2.EA]
38	2150400	PULL-GRIP	83	2232360	PULLEY-CABLE DRUM	131	2266414	BOTTOM PLATE, MAXXUM FT
39	2236000	BEARING NYLINER [2.EA]	84	2261730	WASHER-NYLON A/T CON B	132	9953104	SCREW-8 X 1/2" SS [8.EA]
40	2303431	SCREW 1/4-20X5/8" PPH [4.EA]	85	2996246	TOP BEARING RACE/PINION ASSEMBLY	134	2266610	DECAL-ON/OFF SWITCH
41	2293511	BOLT-UPPER ARM (W/LOCTITE) [4.EA]	86	2263410	SCREW-8-32 X 5/16 (ZN PL) [2.EA]	135	2262535	CONTROL BOX-PLASTIC
42	2293500	BUSHING-SHOULDER (UPPER ARM) [4.EA]	87	2790002	FOOT PEDAL/PLUG ASSEMBLY (AT)	136	2267800	GEAR INDICATOR [2.EA]
43	2152610	SPRING-PIN (LOCKBAR)	88	2263700	PUSH-BUTTON FOOT PEDAL	137	2262220	INDICATOR-DRIVE
44	2233600	LOCK BAR- (BOW MOUNT)	89	2302732	SPRING-LOWER PEDAL SS	138	2261905	BRACKET/INDICATOR
45	2152700	SPRING-(LOCKBAR) CAD.PLT	90	2264023	SWITCH-SEALED ASSEMBLY	139	2301310	SCREW-8-18 X 1/2 (SS)
46	2151700	WASHER-EYE SHAFT(.562 OD) [2.EA]	91	2262114	SCREW-MOUNTING/SWITCH [2.EA]			
47	2153600	EYE SHAFT-CAD.PLATE	92	2233100	NUT-SWITCH MOUNT [2.EA]			

****Seal & Oring Kit P/N 2888460**

* This item is part of an assembly. This item cannot be sold separately due to machining and /or assembly that is required.

P/N 2264942 REV.B 5-01

1. Connect the positive (+) red lead to the positive (+) battery terminal.
2. Connect the negative (—) black lead to the negative (—) battery terminal.



For parts and service
 call toll free: 1-888-404-1119
www.mikesreelrepair.com