

MINN KOTA

PARTS LIST INSERT

BowGuard 360

MODELS: 3.1 HP/B 4.3 HP/B



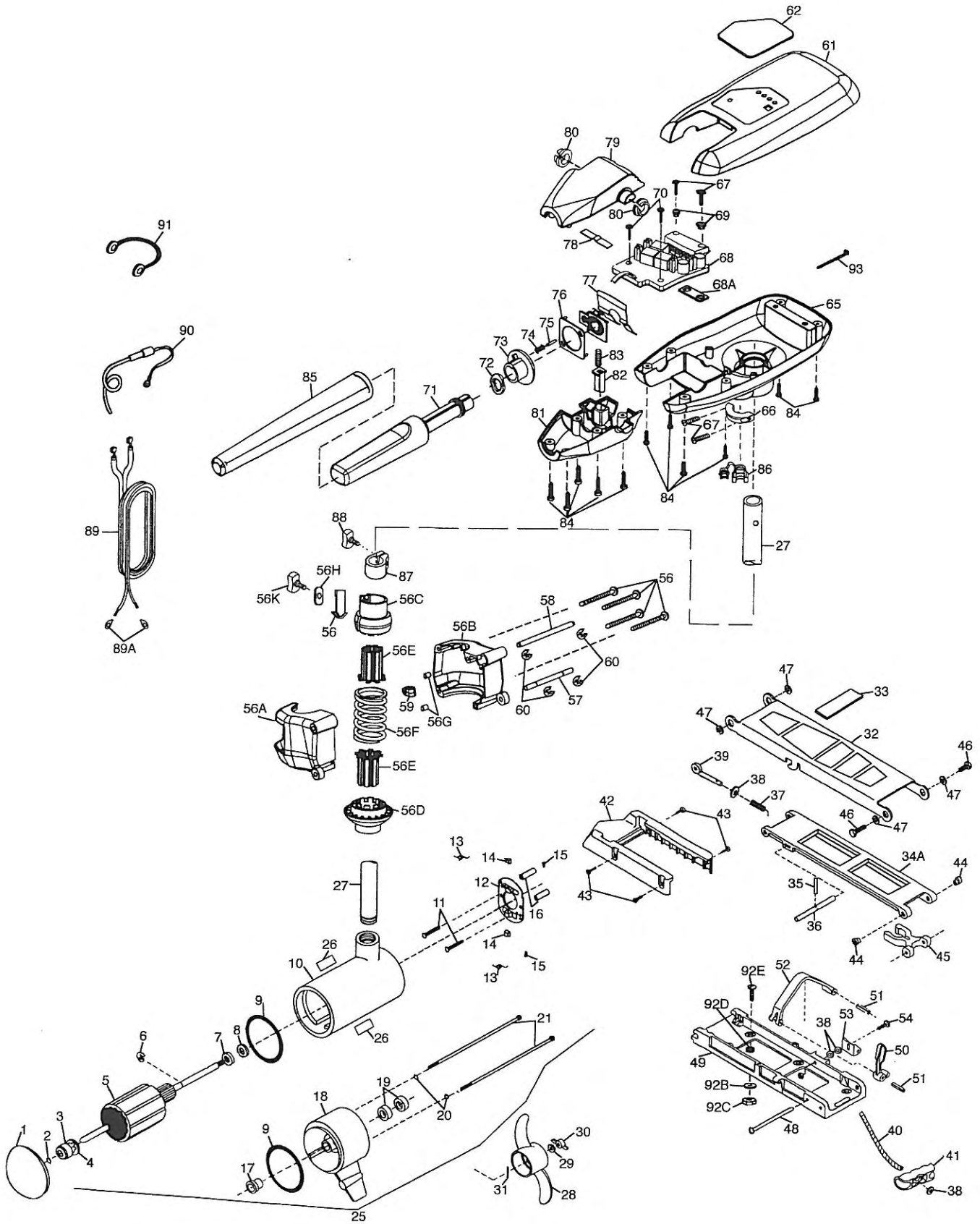
NOTE: Do not return your MINN KOTA motor to your retailer. Your retailer is not authorized to repair or replace this unit. You may obtain service by:

- calling MINN KOTA at 1-800-227-6433
- returning your motor to the MINN KOTA Factory Service Center, or
- sending or taking your motor to any MINN KOTA authorized service center on the enclosed list.

Please include proof of purchase, serial number and date of purchase for warranty service with any of the above options.

REPLACEMENT PARTS LIST.....	p. 2
PARTS DIAGRAM	p. 3
WIRING DIAGRAM	p. 4

PARTS DIAGRAM



Item #	Part Number	Description	Item #	Part Number	Description
1	409-024	Front Endbell	53	226-1910	Bracket Hold Down Strap
2	406-050	Thrust Disc	54	226-3440	Screw
3	409-600	Spherical Bearing	55	233-3101	Nut Hex
4	409-301	Bearing Retainer	56	277-1921	Bow Guard Assembly (Includes #56A-56K)
5	410-202	Armature Assembly (3.1 HP/B)	*56A	226-1921	Bracket Base-Left
5	410-203	Armature Assembly (4.3 HP/B)	*56B	226-1931	Bracket Base-Right
6	409-300	E-Ring	*56C	226-1520	Spring Sleeve-Upper
7	409-170	Thrust Washer (steel)	*56D	226-1530	Spring Sleeve-Lower
8	409-171	Thrust Washer (nylon)	*56E	226-4700	Insert Tube (2 req'd)
9	409-460	O-Ring (2 req'd)	*56F	226-2700	Spring-Breakaway
10	409-257	Center Section w/Magnets	*56G	226-7300	Bushing-Dowel (2 req'd)
11	405-351	Brush Plate Screw (2 req'd)	56H	226-3100	Nut Insert
12	409-301	Brush Plate Assembly	56I	226-2800	Tension Block
13	406-083	Brush Spring (2 req'd)	*56J	226-3470	Screw (4 req'd)
14B	409-072	Brush Assembly-Black (42")	56K	201-1385	Screw-Tension
14B	409-074	Brush Assembly-Black (48")	57	226-0530	Hinge Pin-Lower
14R	409-071	Brush Assembly-Red (42")	58	226-0520	Hinge Pin-Upper
14R	409-073	Brush Assembly-Red (48")	59	226-2310	Guide-Rope
15	409-343	Brush Set Screw (2 req'd)	60	226-3010	E-Ring (4 req'd)
16	405-341	Brush Plate Spacer (2 req'd)	61	230-0228	Control Box Cover (3.1 HP/B)
17	409-000	Flange Bearing	61	230-0229	Control Box Cover (4.3 HP/B)
18	409-033	Rear Endbell	62	233-5606	Decal-Cover (3.1 HP/B)
19	409-461	Seal (2 req'd)	62	234-5606	Decal-Cover (4.3 HP/B)
20	409-462	O-Ring (Thru Bolt) (2 req'd)	65	206-2582	Control Box
21	409-352	Thru Bolt (2 req'd)	66	206-1510	Collar-Control Box
25	233-7070	Motor Assembly Complete (42") (3.1 HP/B)	67	237-2100	Screw (4 req'd)
25	233-7071	Motor Assembly Complete (48") (3.1 HP/B)	68	233-4005	Control Board Assembly (3.1 HP/B)
25	231-7030	Motor Assembly Complete (42") (4.3 HP/B)	68	234-4005	Control Board Assembly (4.3 HP/B)
25	231-7031	Motor Assembly Complete (48") (4.3 HP/B)	68A	236-5105	Insulating Pad
26	206-6648	Decal (2 req'd)	69	230-1710	Washer-Insulated (2 req'd)
27	203-2053	Tube 42"	70	230-1310	Screw (2 req'd)
27	203-2054	Tube 48" (Optional)	71	299-0915	Handle Assembly
28	233-1120	Propeller	72	230-2741	Spring-Cam
29	209-1700	Lockwasher	73	230-2850	Actuator-Cam
30	209-3100	Nut-Prop	74	230-2740	Spring-Actuator
31	209-2600	Pin-Drive	75	230-2600	Pin-Actuator
	299-1958	Bow Guard Bow Mount Assembly	76	230-2851	Actuator Fwd/Rev
32	226-4201	Arm-Upper	77	230-2743	Spring Detent
33	226-5120	Bumper	78	230-2742	Spring Detent (Off)
34	277-4302	Arm-Lower Assembly (Includes #34A-41)	79	206-0411	Handle (Top Half)
*34A	225-4321	Arm-Lower (Order Item #34)	80	206-0005	Bearing-Handle Pivot (2 req'd)
35	215-2610	Spring Pin	81	206-0415	Handle (Lower Half)
36	223-3600	Lock Bar	82	230-3720	Release Button
37	215-2700	Spring	83	230-2745	Spring-Release Button
38	215-1700	Washer-Eye Shaft (4 req'd)	84	230-3412	Screw (11 req'd)
39	215-3600	Eye Shaft	85	206-0425	Handle (Extension)
40	225-1600	Rope	86	233-2900	Strain Relief
41	215-0400	Pull Grip	87	203-1521	Collar-Drive
42	226-3900	Motor Rest	88	201-1365	Screw-Collar
43	230-3430	Screw (4 req'd)	89	233-0600	Leadwire Includes Ring Terminals
44	223-6000	Bearing-Nyliner (2 req'd)	89A	209-0700	Replacement Ring Terminals (2 req'd)
45	229-3801	Tube Lock	90	206-0310	Ground Wire Fused
46	229-3511	Bolt-Upper Arm (2 req'd)	91	234-0610	Connector Cable (24 Volt Only)(4.3 HP/B)
47	229-3500	Bushing (4 req'd)	92	299-4811	Bag Assembly (Includes #92A-92D)
48	223-0500	Hinge Pin	*92A	215-3501	Mounting Bolt (6 req'd)
49	225-1941	Bow Plate	*92B	215-3100	Mounting Nut (6 req'd)
50	226-7200	Latch Lever	*92C	215-1726	Flat Washer (6 req'd)
51	226-0500	Pin-Roll Latch Lever (2 req'd)	*92D	230-1720	Mounting Washer-Rubber (6 req'd)
52	226-3801	Strap Hold Down	93	225-6300	Tie Wrap

WIRING DIAGRAM

