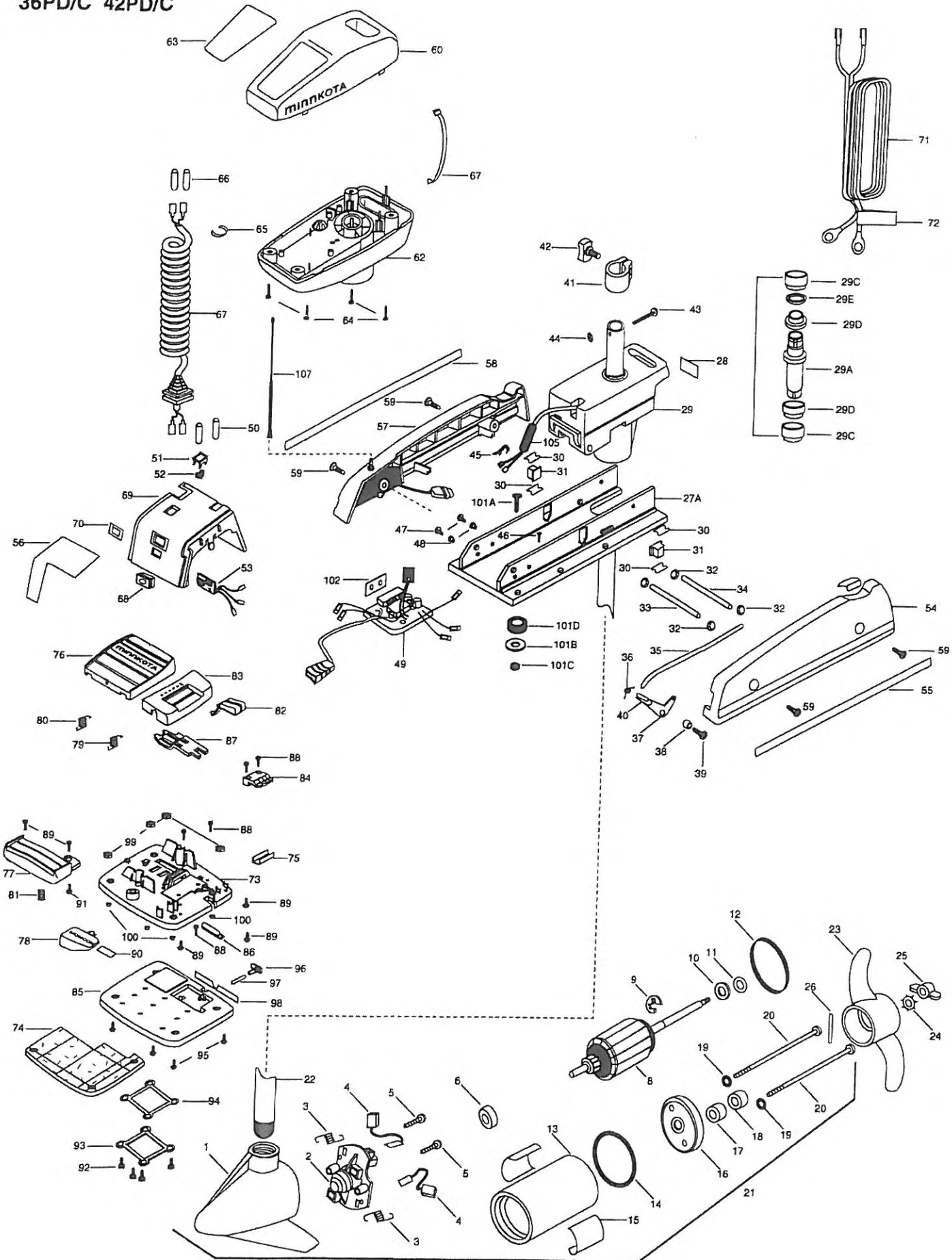


36PD/C 42PD/C



1	406022	FRONT ENDBELL 36PD/C	*29D	2307303	BUSHING- OUTSIDE (2 REQ'D)	70	2306605	DECAL BATTERY GAUGE	
	406023	FRONT ENDBELL 42PD/C	*29E	2304600	0-RING	71	2090601	LEADWIRE (10 GA) RINGS	
2	406404	BRUSH PLATE ASSEMBLY 36PD/C		30	2305110	PAD-PIVOT COVER (4 REQ'D)	72	2305800	DECAL- LEADWIRE (BATTERY)
	406403	BRUSH PLATE ASSEMBLY 42PD/C		31	2305100	PAD-PIVOT (2 REQ'D)	73	2994708	FOOT PEDAL ASSY. W/WEDGE (ITEMS 73A-100)
3	406081	BRUSH SPRING (2 REQ'D) 36PD/C		32	2013100	NUT-SPEED (4 REQ'D)	73A	2304511	FOOT PEDAL BASE-CORLESS
	406082	BRUSH SPRING (2 REQ'D) 42PD/C		33	2300500	PIN-LATCH (PD BASE)	*74	2004705	FLOTATION MATERIAL
4	406072	BRUSH ASSEMBLY (2 REQ'D) 36PD/C		34	2300510	PIN-PIVOT (PD BASE)	75	2308500	WEAR PLATE- FOOT PEDAL
	406071	BRUSH ASSEMBLY (2 REQ'D) 42PD/C		35	2303610	ROD-RELEASE	76	2304516	FOOT PEDAL-UPPER
5	406341	BRUSH PLATE SCREW (2 REQ'D) 36PD/C		36	2302700	SPRING-RELEASE LEVER S/S	77	2304520	FOOT PEDAL-LOWER
	406342	BRUSH PLATE SCREW (2 REQ'D) 42PD/C		37	2303710	LEVER-RELEASE	78	2307210	LEVER MOM/CON
6	406010	BALL BEARING		38	2301700	SPACER-RELEASE LEVER	79	2302730	SPRING-LONG-UPPER PEDAL
8	405204	ARMATURE ASSEMBLY 36PD/C		39	2303430	SCREW-1/4-20 x 5/8-SELFTAP	80	2302731	SPRING-SHORT-UPPER PEDAL
	406208	ARMATURE ASSEMBLY 42PD/C		40	2300101	RELEASE-KNOB	81	2302732	SPRING-LOWER PEDAL SS
9	405300	E-RING		41	2031521	COLLAR DRIVE (W/INERT)	82	2300120	KNOB-SPEED SELECTOR
10	406170	THRUST WASHER- STEEL (AS REQ'D)		42	2011365	SCREW-COLLAR KNOB	83	2300122	HOUSING-SPEED SELECTOR
	405171	THRUST WASHER- NYLON (AS REQ'D)		43	2033400	SCREW-10-24 x 1-3/4	84	2302840	ACTUATOR-BOARD
12	406480	GASKET 36PD/C		44	2013110	NUT-HEX	85	2994707	WEDGE ASSEMBLY
	406490	GASKET 42PD/C		45	2302935	STRAIN RELIEF-DR. HOUSING	86	2302841	ACTUATOR-MOM/CON
13	405257	CENTER SECTION W/MAGNETS 36PD/C		46	2332100	SCREW-8-32 x 3/8	87	2302842	ACTUATOR-STEERING
	406256	CENTER SECTION W/MAGNETS 42PD/C		47	2332101	SCREW-8-32 x 1/2 SS (2 REQ'D)	88	2302100	SCREW-6-20 x 1/2 (5 REQ'D)
14	406460	O-RING 36PD/C		48	2301710	WASHER-INSUL. TRANSF. BAR (2 REQ'D)	89	2372100	SCREW-8-18 x 5/8 SS (5 REQ'D)
	406470	O-RING 42PD/C		49	2774024	CTRL BRD ASSY-12V PD/C INCLUDES 51, 52	90	2286610	DECAL ON/OFF SWITCH
15	2006806	DECAL-MOTOR RED (2 REQ'D) 36PD/C		50	2305400	SHRINK TUBE-3/8 OD (4 REQ'D)	91	2335130	BUMPER ACTUATOR
	2006605	DECAL-MOTOR GOLD (2 REQ'D) 42PD/C		51	2304072	BEZEL-SWITCH	92	2301310	SCREW-#8 THD 1/2 SS (4 REQ'D)
16	406032	REAR ENDBELL 36PD/C		52	2304073	SWITCH-ROCKER	93	2300250	COVER-BATTERY COMPARTMENT
	406033	REAR ENDBELL 42PD/C		53	2034031	BATTERY METER-ELECT.12 V	94	2304602	GASKET-BATTERY COMPARTMENT
17	406461	SEAL		54	2993801	SIDEPLATE (LEFT) W/REST PAD	95	2303426	SCREW- 1/4-20
18	406471	SEAL- CUP		55	2004927	DECAL-LF SIDEPLATE 36PD/C	96	2304080	SWITCH-RF FOOT PEDAL
	401462	O-RING —THRU BOLT (2 REQ'D) 36PD/C		56	2004923	DECAL-LF SIDEPLATE 42PD/C	97	2304081	MAGNET-SWITCH
	405462	O-RING —THRU BOLT (2 REQ'D) 42PD/C		57	2305616	DECAL-ON/OFF 36PD/C	98	2306822	DECAL-OFF/ON
20	405352	THRU BOLT (2 REQ'D) 36PD/C			2305614	DECAL-ON/OFF 42PD/C	99	9950354	HEX NUT- 1/4-20 (4 REQ'D)
	406353	THRU BOLT (2 REQ'D) 42PD/C		58	2303927	SIDEPLATE-W/RCVR-P/D	100	2305131	RUBBER BUMPER (4 REQ'D)
21	2069026	MOTOR ASSEMBLY 36PD/C		59	2004926	DECAL-RT SIDEPLATE 36PD/C	101	2994803	BAG ASSEMBLY (ITEMS 101A-101D)
	2099051	MOTOR ASSEMBLY 42PD/C			2004922	DECAL-RT SIDEPLATE 42PD/C	*101A	2153501	BOLT-MOUNTING W/STGD (4 REQ'D)
	2889052	MOTOR ASSEMBLY 42PD/C-54"		59	2303430	SCREW-1/4-20 x 5/8-SELFTAP (4 REQ'D)	*101B	2151726	WASHER-STANDARD 5/16 SS (4 REQ'D)
22	2032053	TUBE (COMPOSITE) 42"		60	2300201	COVER-CONTROL BOX RED 36PD/C	*101C	2153100	NUT-MOUNTING (4 REQ'D)
	2032054	TUBE (COMPOSITE) 48" OPTIONAL			2300215	COVER-CONTROL BOX 42PD/C	*101D	2301720	WASHER-MOUNTING-RUBBER (6 REQ'D)
	2032055	TUBE (COMPOSITE) 54" OPTIONAL		62	2301212	CONTROL BOX	102	2305141	INSULATION PAD
23	2061125	PROPELLER (W.WEDGE) 36PD/C		63	2315625	DECAL-COVER 36PD/C	*105	2884079	RF FILTER
	2091150	PROPELLER (W.WEDGE) 42PD/C			2315632	DECAL-COVER 42PD/C	106	2994828	BAG ASSEMBLY (ANTENNA)
24	2051700	LOCKWASHER-PROP		64	2012100	SCREW-8-18 x 5/8 THD CUT (4 REQ'D)	*107	2005115	RF ANTENNA
25	2053100	NUT-PROP		65	2303000	RING-PIG 36PD/C			
26	2092600	PIN-DRIVE SS			2303001	RING-PIG 42PD/C			
*27	2991931	BASE ASSEMBLY		66	2065400	WIRE INSULATOR-LGE 1-3/4 (2 REQ'D)			
27A	2301912	BASE MACHINED		67	2301210	COIL CORD-W/STRAIN RELIEF 36PD/C			
28	2305519	DECAL-STEERING MTR			2301211	COIL CORD-B/STRAIN RELIEF 36PD/C 48"			
29	2301640	DRIVE HOUSING			2301230	COIL CORD-W/STRAIN RELIEF 42PD/C			
29A	2302001	DRIVE HOUSING SLEEVE			2301231	COIL CORD-W/STRAIN RELIEF 42PD/C 48-54"			
29B	2887300	BUSHING KIT (29C,29D,29E)		68	2302920	GROMMET-LEADWIRE/SP.COVER			
*29C	2307302	BUSHING- INSIDE (2 REQ'D)		69	2306533	COVER-SPEED CONTROL			

* This item is part of an assembly. This item cannot be sold separately due to machining and /or assembly that is required.

