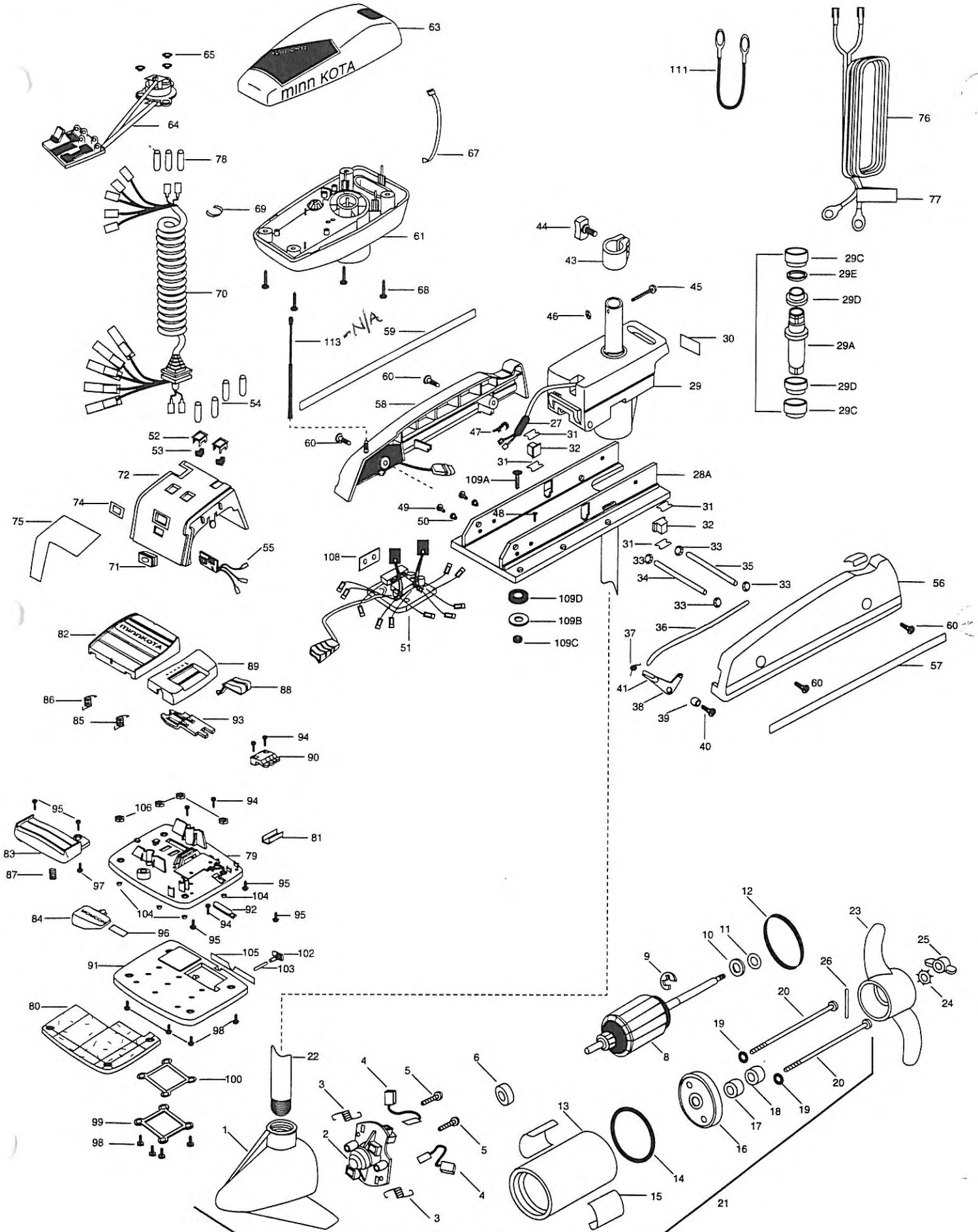


36PD/AP/C 42PD/AP/C 48PD/AP/C

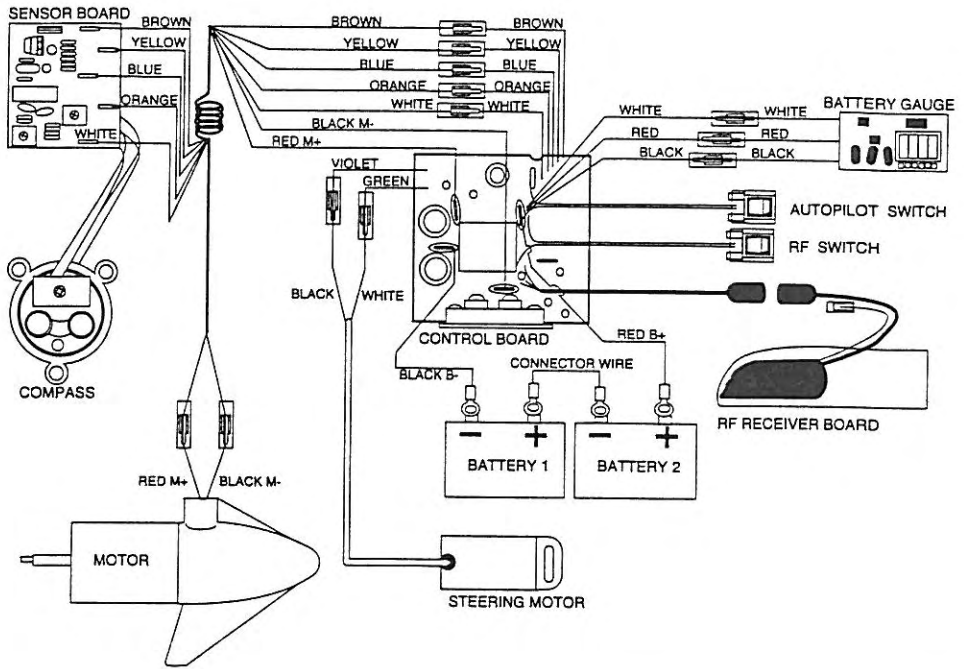


1	406022	FRONT ENDBELL 36PD/AP/C	*29E	2304600	O-RING	76	2090600	LEADWIRE (10 GA) RINGS
	406023	FRONT ENDBELL	*29F	2307025	MOTOR DRIVE HOUSING W/WIRE & GROMMET	77	2305800	DECAL LEADWIRE (BATTERY)
2	406404	BRUSH PLATE ASSEMBLY 36PD/AP/C	30	2305519	DECAL-STEERING MTR	78	2065400	WIRE INSULATOR (3 REQ'D)
	406403	BRUSH PLATE ASSEMBLY	31	2305110	PAD-PIVOT SUPPORT (4 REQ'D)	79	2994708	FOOT PEDAL ASSY.W/WEDGE (ITEMS 79A-106)
3	406081	BRUSH SPRING (2 REQ'D) 36PD/AP/C	32	2305100	PAD-PIVOT (2 REQ'D)	79A	2304511	FOOT PEDAL BASE-CORDLESS
	406082	BRUSH SPRING (2 REQ'D)	33	2013100	NUT-SPEED	*80	2004705	FLOTATION MATERIAL
4	406072	BRUSH ASSEMBLY (2 REQ'D) 36PD/AP/C	34	2300500	PIN-LATCH (PD BASE)	81	2308500	WEAR PLATE
	406071	BRUSH ASSEMBLY (2 REQ'D)	35	2300510	PIN-PIVOT (PD BASE)	82	2304516	FOOT PEDAL-UPPER
5	406341	BRUSH PLATE SCREW (2 REQ'D) 36PD/AP/C	36	2303610	ROD-RELEASE (11 GA.)	83	2304520	FOOT PEDAL-LOWER
	406342	BRUSH PLATE SCREW (2 REQ'D)	37	2302700	SPRING- RELEASE LEVER	84	2307210	LEVER MOM/CON
6	406010	BALL BEARING	38	2303710	LEVER-RELEASE	85	2302730	SPRING-LONG-UPPER PEDAL
8	405204	ARMATURE ASSEMBLY 36PD/AP/C	39	2301700	SPACER-RELEASE LEVER	86	2302731	SPRING-SHORT-UPPER PEDAL
	406208	ARMATURE ASSEMBLY 42PD/AP/C	40	2303430	SCREW-1/4-20 x 5/8	87	2302732	SPRING-LOWER PEDAL SS
	406207	ARMATURE ASSEMBLY 48PD/AP/C	42	2300101	RELEASE-KNOB	88	2300120	KNOB-SPEED SELECTOR
9	405300	E-RING	43	2031521	COLLAR DRIVE W/INSERT	89	2300122	HOUSING-SPEED SELECTOR
10	406170	THRUST WASHER- STEEL (AS REQ'D)	44	2011365	SCREW-COLLAR KNOB	90	2302840	ACTUATOR-BOARD
11	405171	THRUST WASHER- NYLATRON (AS REQ'D)	45	2332102	SCREW-10-24 X 1-3/4 SS	91	2994707	WEDGE ASSEMBLY
12	406480	GASKET 36PD/AP/C	46	2333101	NUT-HEX SS	92	2302841	ACTUATOR-MOM/CON
	406490	GASKET	47	2302935	STRAIN RELIEF-DR. HOUSING	93	2302842	ACTUATOR-STEERING
13	405257	CENTER SECTION W/MAGNETS 36PD/AP/C	48	2332100	SCREW-8-32 X 3/8	94	2302100	SCREW-6-20 X 1/2 (5 REQ'D)
	409253	CENTER SECTION W/MAGNETS	49	2332101	SCREW-8-32 X 1/2 SS (2 REQ'D)	95	2372100	SCREW-8-18 X 5/8 SS (5 REQ'D)
14	406460	O-RING 36PD/AP/C	50	2301710	WASHER-INSUL. TRANSF. BAR (2 REQ'D)	96	2266610	DECAL ON/OFF SWITCH
	406470	O-RING	51	2304025	CTRL BRD ASSY-12V AP/C	97	2335130	BUMPER ACTUATOR
15	2006606	DECAL (2 REQ'D) RED	52	2304027	CTRL BRD ASSY-24V AP/C	98	2301310	SCREW-#8 THD 1/2 SS (4 REQ'D)
	2006605	DECAL (2 REQ'D) GOLD	53	2304072	BEZEL-SWITCH (2 REQ'D)	99	2300250	COVER-BATTERY COMPARTMENT
16	406032	REAR ENDBELL 36PD/AP/C	54	2304073	SWITCH-ROCKER (2 REQ'D)	100	2304602	GASKET-BATTERY COMPARTMENT
	406033	REAR ENDBELL	55	2375400	SHRINK TUBE-1/4 OD (4 REQ'D)	101	2303426	SCREW- 1/4-20 (4 REQ'D)
17	406461	SEAL	55	2034031	BATTERY METER-ELECT. 12 V	102	2304080	SWITCH-RF FOOT PEDAL
18	406471	SEAL- CUP		2034032	BATTERY METER-ELECT. 24 V	103	2304081	MAGNET- SWITCH
19	401462	O-RING —THRU BOLT (2 REQ'D) 36PD/AP/C	56	2993801	SIDEPLATE(LEFT)W/REST PAD	104	2305131	RUBBER BUMPER (4 REQ'D)
	405462	O-RING —THRU BOLT (2 REQ'D)	57	2004929	DECAL-LF SIDEPLATE 36PD/AP/C	105	2306622	DECAL- OFF/ON
20	405352	THRU BOLT (2 REQ'D) 36PD/AP/C		2004917	DECAL-LF SIDEPLATE	106	2303115	HEX NUT 1/4-20 (4 REQ'D)
	406353	THRU BOLT (2 REQ'D)	58	2304924	NR96-SIDEPLATE-W/RCVR-A/P	108	2305141	INSULATION PAD
21	2069026	MOTOR ASSEMBLY 36PD/AP/C	59	2004928	DECAL-RT SIDEPLATE 36PD/AP/C	109	2994803	BAG ASSEMBLY (ITEMS 109A-109D)
	2099051	MOTOR ASSEMBLY 42PD/AP/C		2004916	DECAL-RT SIDEPLATE	*109A	2153501	BOLT-MOUNTING W/STGD (4 REQ'D)
	2889052	MOTOR ASSEMBLY 42PD/AP/C 54"	60	2303430	SCREW-1/4-20 X 5/8 (4 REQ'D)	*109B	2151726	WASHER-STANDARD 5/16 SS (4 REQ'D)
	2099056	MOTOR ASSEMBLY 48PD/AP/C	61	2302513	CONTROL BOX (PLASTIC)	*109C	2153100	NUT-MOUNTING (4 REQ'D)
	2889057	MOTOR ASSEMBLY 48PD/AP/C 54"	63	2300211	CONTROL BOX COVER- RED 36PD/AP/C	*109D	2301720	WASHER-MOUNTING (6 REQ'D)
22	2032053	TUBE 42"		2300212	CONTROL BOX COVER- GOLD	111	2090620	CONNECTOR CABLE (24V ONLY)
	2032054	TUBE 48" OPTIONAL	64	2994000	CONTROL BOARD COMPASS ASSY	113	2005115	RF ANTENNA
	2032055	TUBE 54" OPTIONAL	65	2302960	GROMMET-COMPASS (3 REQ'D)			
23	2061125	PROPELLER (W.WEDGE) 36PD/AP/C ONLY	66	2332103	SCREW-6-20 X 3/8 (2 REQ'D)			
	2091150	PROPELLER (W.WEDGE)	67	2256300	TIE WRAP-5.5"-BLACK			
24	2051700	LOCKWASHER-PROP	68	2372100	SCREW-8-18 X 5/8 SS (4 REQ'D)			
25	2053100	NUT-PROP	69	2303001	RING-PIG			
26	2092600	PIN-DRIVE	70	2301220	COIL CORD-W/STRAIN RELIEF 42"			
27	2304079	RF FILTER		2301221	COIL CORD-W/STRAIN RELIEF 48"			
*28	2991931	BASE ASSEMBLY (CORDLESS)		2301222	COIL CORD-W/STRAIN RELIEF 54"			
28A	2301912	BASE MACHINED	71	2302920	GROMNET-LEADWIRE/SP.COVER			
29	2301840	DRIVE HOUSING	72	2306532	COVER-SPEED CONTROL			
29A	2302001	DRIVE HOUSING SLEEVE	74	2306605	DECAL BATTERY GAUGE			
*29B	2887301	BUSHING KIT ( 29C, 29D, 29E )	75	2305603	DECAL-ON/OFF 36PD/AP/C			
*29C	2307302	BUSHING- INSIDE (2 REQ'D)		2305604	DECAL-ON/OFF 42PD/AP/C			
*29D	2307303	BUSHING- OUTSIDE (2 REQ'D)		2305605	DECAL-ON/OFF 48PD/AP/C			

36 PD/AP/C, 42 PD/AP/C, 48 PD/AP/C

\* This item is if an assembly. This item cannot be sold separately due to machining and assembly that is required.

# 48PD/AP/C RT48/AP/C



# 36-42PD/AP/C RT42/AP/C

