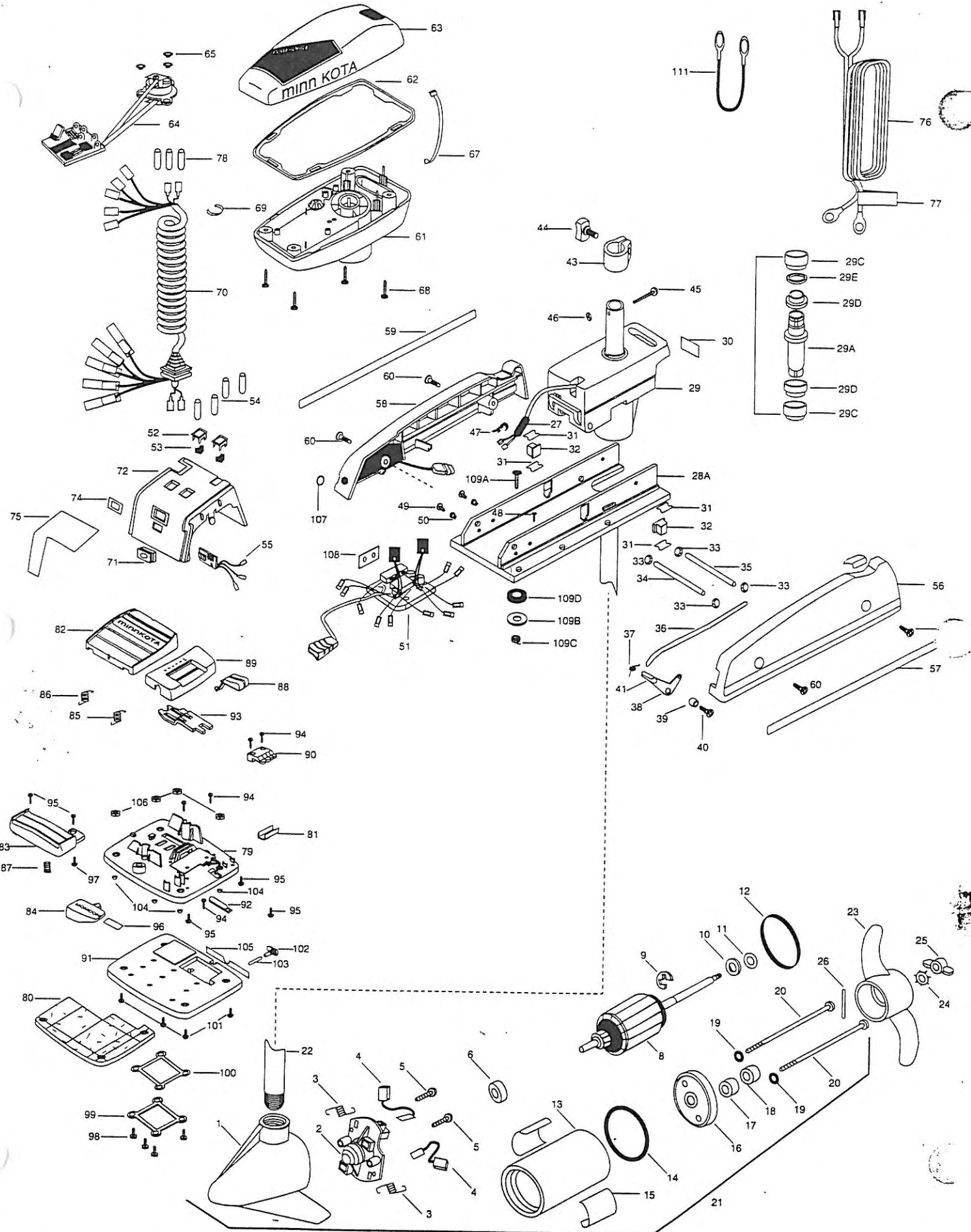


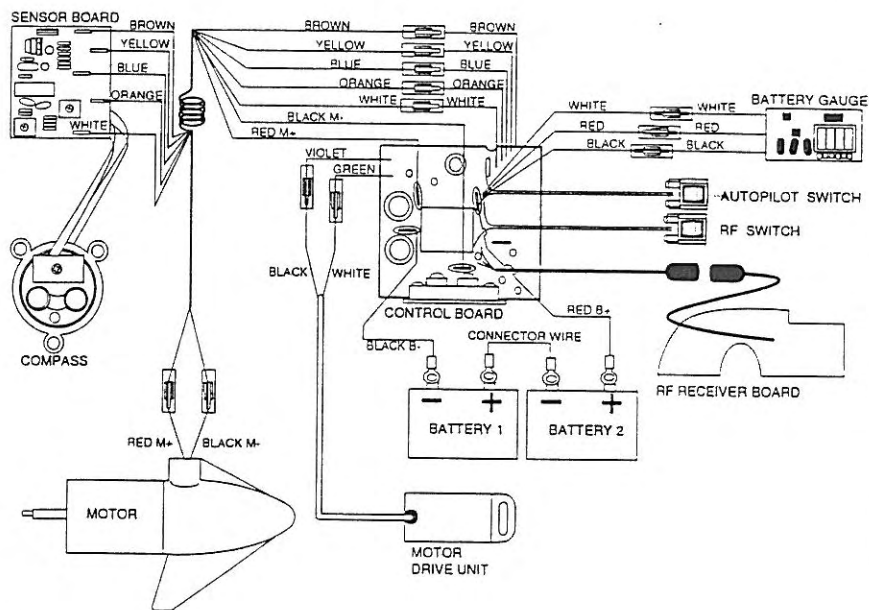
36PD/AP/C 42PD/AP/C 48PD/AP/C



1	406022	FRONT ENDBELL 36PD/AP/C	*29C	2307302	BUSHING- INSIDE (2 REQ'D)	75	2305603	DECAL-ON/OFF 36PD/AP/C	
	406023	FRONT ENDBELL	*29D	2307303	BUSHING- OUTSIDE (2 REQ'D)		2305604	DECAL-ON/OFF 42PD/AP/C	
2	406404	BRUSH PLATE ASSEMBLY 36PD/AP/C	*29E	2304600	O-RING		2305605	DECAL-ON/OFF 48PD/AP/C	
	406403	BRUSH PLATE ASSEMBLY	*29F	2307025	MOTOR DRIVE HOUSING W/WIRE & GROMMET	76	2090600	LEADWIRE (10 GA) RINGS	
3	406081	BRUSH SPRING (2 REQ'D) 36PD/AP/C		30	2305519	DECAL-STEERING MTR	77	2305800	DECAL LEADWIRE (BATTERY)
	406082	BRUSH SPRING (2 REQ'D)		31	2305110	PAD-PIVOT SUPPORT (4 REQ'D)	78	2065400	WIRE INSULATOR (3 REQ'D)
4	406072	BRUSH ASSEMBLY (2 REQ'D) 36PD/AP/C		32	2305100	PAD-PIVOT (2 REQ'D)	79	2994705	FOOT PEDAL ASSY.W/WEDGE (ITEMS 79A-106)
	406071	BRUSH ASSEMBLY (2 REQ'D)		33	2013100	NUT-SPEED	79A	2304511	FOOT PEDAL BASE-CORDLESS
5	406341	BRUSH PLATE SCREW (2 REQ'D) 36PD/AP/C		34	2300500	PIN-LATCH (PD BASE)	*80	2004705	FLOTATION MATERIAL
	406342	BRUSH PLATE SCREW (2 REQ'D)		35	2300510	PIN-PIVOT (PD BASE)	81	2308500	WEAR PLATE
6	406010	BALL BEARING		36	2303610	ROD-RELEASE (11 GA.)	82	2304516	FOOT PEDAL-UPPER
8	405204	ARMATURE ASSEMBLY 36PD/AP/C		37	2302700	SPRING- RELEASE LEVER	83	2304520	FOOT PEDAL-LOWER
	406208	ARMATURE ASSEMBLY 42PD/AP/C		38	2303710	LEVER-RELEASE	84	2307210	LEVER MOM/CON
	406207	ARMATURE ASSEMBLY 48PD/AP/C		39	2301700	SPACER-RELEASE LEVER	85	2302730	SPRING-LONG-UPPER PEDAL
9	405300	E-RING		40	2303430	SCREW-1/4-20 X 5/8	86	2302731	SPRING-SHORT-UPPER PEDAL
10	406170	THRUST WASHER- STEEL (AS REQ'D)		42	2300101	RELEASE-KNOB	87	2302732	SPRING-LOWER PEDAL SS
11	405171	THRUST WASHER- NYLATRON (AS REQ'D)		43	2031521	COLLAR DRIVE W/INSERT	88	2300120	KNOB-SPEED SELECTOR
12	406480	GASKET 36PD/AP/C		44	2011365	SCREW-COLLAR KNOB	89	2300122	HOUSING-SPEED SELECTOR
	406490	GASKET		45	2332102	SCREW-10-24 X 1-3/4 SS	90	2302840	ACTUATOR-BOARD
13	405257	CENTER SECTION W/MAGNETS 36PD/AP/C		46	2333101	NUT-HEX SS	91	2994704	WEDGE ASSEMBLY
	409253	CENTER SECTION W/MAGNETS		47	2302935	STRAIN RELIEF-DR. HOUSING	92	2302841	ACTUATOR-MOM/CON
14	406460	O-RING 36PD/AP/C		48	2332100	SCREW-8-32 X 3/8	93	2302842	ACTUATOR-STEERING
	406470	O-RING		49	2332101	SCREW-8-32 X 1/2 SS (2 REQ'D)	94	2302100	SCREW-6-20 X 1/2 (5 REQ'D)
15	2006606	DECAL (2 REQ'D) RED		50	2301710	WASHER-INSUL. TRANSF. BAR (2 REQ'D)	95	2372100	SCREW-8-18 X 5/8 SS (5 REQ'D)
	2006605	DECAL (2 REQ'D) GOLD		51	2304025	CTRL BRD ASSY-12V AP/C	96	2306601	DECAL MOM/CON LEVER
16	406032	REAR ENDBELL 36PD/AP/C			2304027	CTRL BRD ASSY-24V AP/C	97	2335130	BUMPER ACTUATOR
	406033	REAR ENDBELL		52	2304072	BEZEL-SWITCH (2 REQ'D)	98	2301310	SCREW-#8 THD 1/2 SS (4 REQ'D)
17	406461	SEAL		53	2304073	SWITCH-ROCKER (2 REQ'D)	99	2300250	COVER-BATTERY COMPARTMENT
18	406471	SEAL- CUP		54	2305400	SHRINK TUBE-3/8 OD (4 REQ'D)	100	2304602	GASKET-BATTERY COMPARTMENT
19	401462	O-RING —THRU BOLT (2 REQ'D) 36PD/AP/C		55	2034031	BATTERY METER-ELECT. 12 V	101	2303425	SCREW- 1/4-20 (4 REQ'D)
	405462	O-RING —THRU BOLT (2 REQ'D)			2034032	BATTERY METER-ELECT. 24 V	102	2304080	SWITCH-RF FOOT PEDAL
20	405352	THRU BOLT (2 REQ'D) 36PD/AP/C		56	2993801	SIDEPLATE(LEFT)W/REST PAD	103	2304081	MAGNET- SWITCH
	406353	THRU BOLT (2 REQ'D)		57	2004929	DECAL-LF SIDEPLATE 36PD/AP/C	104	2305131	RUBBER BUMPER (4 REQ'D)
21	2069026	MOTOR ASSEMBLY 36PD/AP/C			2004917	DECAL-LF SIDEPLATE	105	2306622	DECAL- OFF/ON
	2099051	MOTOR ASSEMBLY 42PD/AP/C		58	2303924	NR96-SIDEPLATE-W/RCVR-A/P	106	2303115	HEX NUT 1/4-20 (4 REQ'D)
	2889052	MOTOR ASSEMBLY 42PD/AP/C 54"		59	2004928	DECAL-RT SIDEPLATE 36PD/AP/C	107	2306620	DECAL- LENS COVER
	2099056	MOTOR ASSEMBLY 48PD/AP/C			2004916	DECAL-RT SIDEPLATE	108	2305141	INSULATION PAD
	2889057	MOTOR ASSEMBLY 48PD/AP/C 54"		60	2303430	SCREW-1/4-20 X 5/8 (4 REQ'D)	109	2994803	BAG ASSEMBLY (ITEMS 109A-109D)
	2880316	WIRE EXTSN KIT 36PD/AP/C 42PD/AP/C 54"		61	2302511	CONTROL BOX (PLASTIC)	*109A	2153501	BOLT-MOUNTING W/STGD (4 REQ'D)
	2880317	WIRE EXTENSION KIT 48PD/AP/C 54"		62	2306932	GASKET CONTROL BOX-BLACK	*109B	2151726	WASHER-STANDARD 5/16 SS (4 REQ'D)
22	2032053	TUBE 42"		63	2300211	CONTROL BOX COVER- RED 36PD/AP/C	*109C	2153100	NUT-MOUNTING (4 REQ'D)
	2032054	TUBE 48" OPTIONAL			2300212	CONTROL BOX COVER- GOLD	*109D	2301720	WASHER-MOUNTING (6 REQ'D)
	2032055	TUBE 54" OPTIONAL		64	2994000	CONTROL BOARD COMPASS ASSY	111	2090620	CONNECTOR CABLE (24V ONLY)
23	2061125	PROPELLER (W.WEDGE) 36PD/AP/C ONLY		65	2302960	GROMMET-COMPASS (3 REQ'D)			
	2091150	PROPELLER (W.WEDGE)		66	2332103	SCREW-6-20 X 3/8 (2 REQ'D)			
24	2051700	LOCKWASHER-PROP		67	2256300	TIE WRAP-5.5"-BLACK			
25	2053100	NUT-PROP		68	2372100	SCREW-8-18 X 5/8 SS (4 REQ'D)			
26	2092600	PIN-DRIVE		69	2303001	RING-PIG			
27	2304079	RF FILTER		70	2301220	COIL CORD-W/STRAIN RELIEF 42"			
*28	2991936	BASE ASSEMBLY (CORDLESS)			2301221	COIL CORD-W/STRAIN RELIEF 48"			
28A	2301912	BASE MACHINED			2301222	COIL CORD-W/STRAIN RELIEF 54"			
29	2301840	DRIVE HOUSING-QUICK RELEASE		71	2302920	GROMNET-LEADWIRE/SPCOVER			
29A	2302001	DRIVE HOUSING SLEEVE		72	2306532	COVER-SPEED CONTROL			
*29B	2887301	BUSHING KIT (29C, 29D, 29E)		74	2306605	DECAL BATTERY GAUGE			

* This item is part of an assembly. This item cannot be sold separately due to machining and /or assembly that is required.

48PD/AP/C RT48/AP/C



36-42PD/AP/C RT42/AP/C

