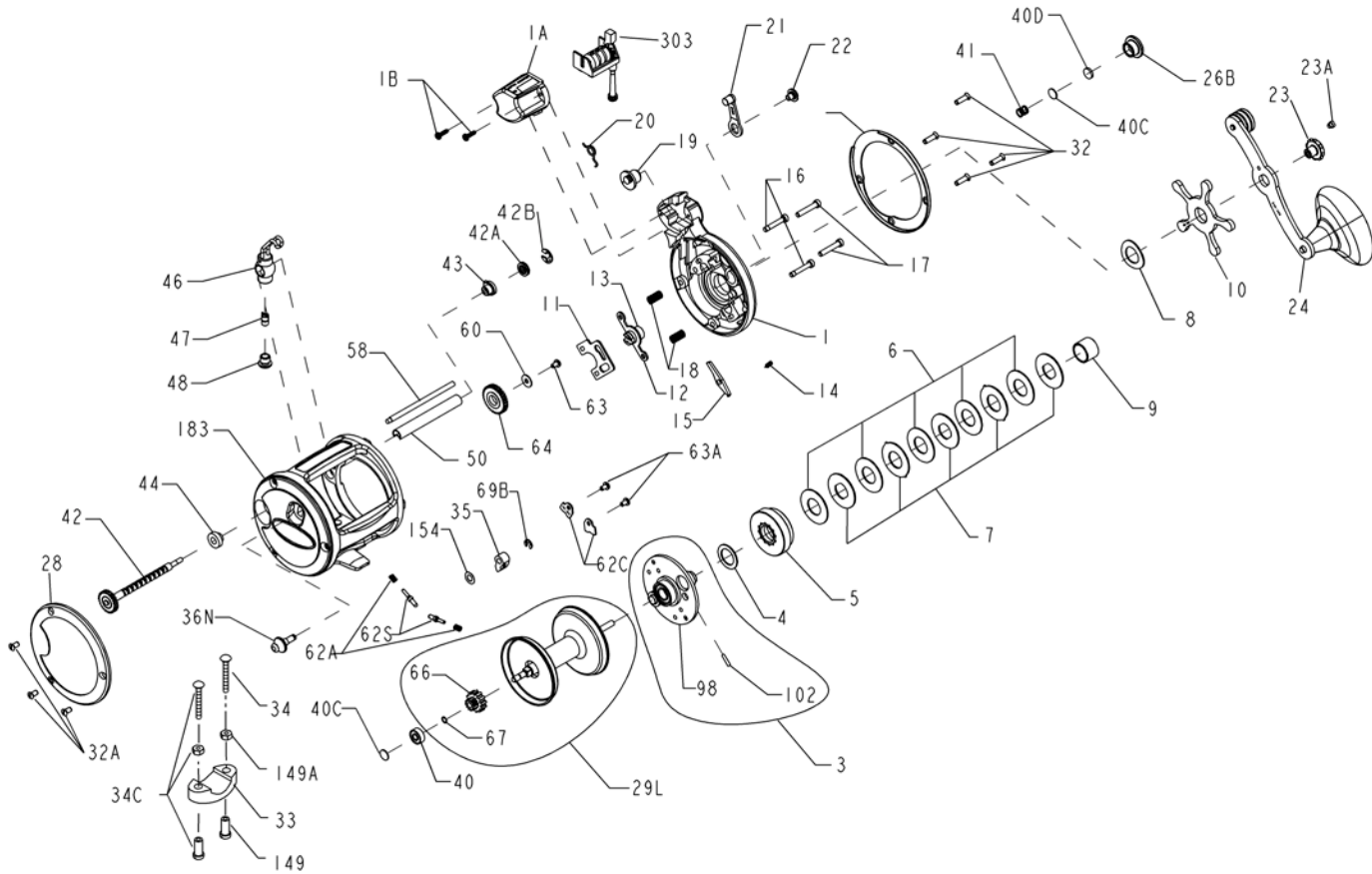




PARTS LIST FOR MODEL 320GT2LC



<u>KEY NO.</u>	<u>PART NO.</u>	<u>DESCRIPTION</u>
7	007C970	Metal Drag Washer (Set of 5)
8	008 349	Tension Spring
9	009 320	Spacing Sleeve
10	010 349	Star Drag
11	011 320	Eccentric Jack
12	012 155	Pinion Yoke
13	013N320	Pinion Gear
14	014 330	Dog Spring
15	015 320	Dog
16	016 113H	Lower Bridge Screw (2 req.)
17	017 113H	Upper Bridge Screw (2 req.)
18	018 060	Clutch Spring (2 req.)
19	019 320	Eccentric Cam
20	020 155	Eccentric Spring
21	021 285	Eccentric Lever Assembly
22	022 060CH	Eccentric Screw
23	023 114	Handle Assembly Screw
23A	110 060	Handle Lock Screw
24	024S320	Handle Assembly
26B	026B320	Spool Tension Control Cap
28	028 320GT2	Left Side Ring
29L	029L320	Spool Assembly
32	032 017	Side Plate Screw (4 req.)
32A	110 050	Frame Screw (3 req.)
33	033 113	Rod Clamp
*	*033R200	*Ringed Rod Clamp (Optional)
34	034 045	Clamp Screw Only
34C	034C045	Clamp Screw w/Nuts
35	035 310N	Click Tongue
36N	036N320LD	Click Button
36B	036 700	Worm Shaft Nut
40	040 320	Ball Bearing
40C	040C320	Metal Thrust Washer (2 req.)
40D	040D320	Rubber Thrust Washer
41	041 330	Right Side Thrust Spring
42	042 320GT2LC	Worm
42A	042A320GT2LC	Gear, L.C. Drive
42B	042B310GT2LC	Retaining Ring, L.C. Drive
43	043 330	Right Side Worm Bushing
44	044 330	Left Side Worm Bushing
46	046 320N	Line Guide Carriage
47	047 975	Pawl
48	048 330N	Pawl Cover Screw
50	050T320	Worm Shield
58	058 320	Line Guide Post
60	060 320	Idler Gear Washer
60A	060 320	Idler Gear Washer
62A	062A310	Click Spring (2 req.)
62C	062C321LH	Click Spring Cover (2 req.)
62S	062S310	Click Pin (2 req.)
63	063 500S	Idler Gear Screw
63A	063 500S	Click Spring Screw (2 req.)
64	064 320	Idler Gear
66	066 320	Spool Gear Click Ratchet
67	067 009	Spool Gear Lock Ring
69B	069B600	Retaining Ring (Click Button)
98	098 320	Gear Sleeve
102	102 113	Gear Sleeve Pin
149	149 045	Clamp Nut Only
149A	149 200	Hex Nut Only
154	154 117	Click Button Washer
183	183 320GT2LC	Frame
303	303 320GT2LC	Counter Wheel Assembly

<u>KEY NO.</u>	<u>PART NO.</u>	<u>DESCRIPTION</u>
1	001 320GT2LC	Right Side Plate
1A	001A310GT2LC	Line Counter Cover
1B	046 430G	Screw, L.C. cover (2 req.)
2	002 320GT2LC	Right Side Ring
3	003 320	Bridge assembly
4	004 349	Fiber Washer
5	005N320	Main Gear
6	006 320	Friction Drag Washer (5 req)

*Not Shown