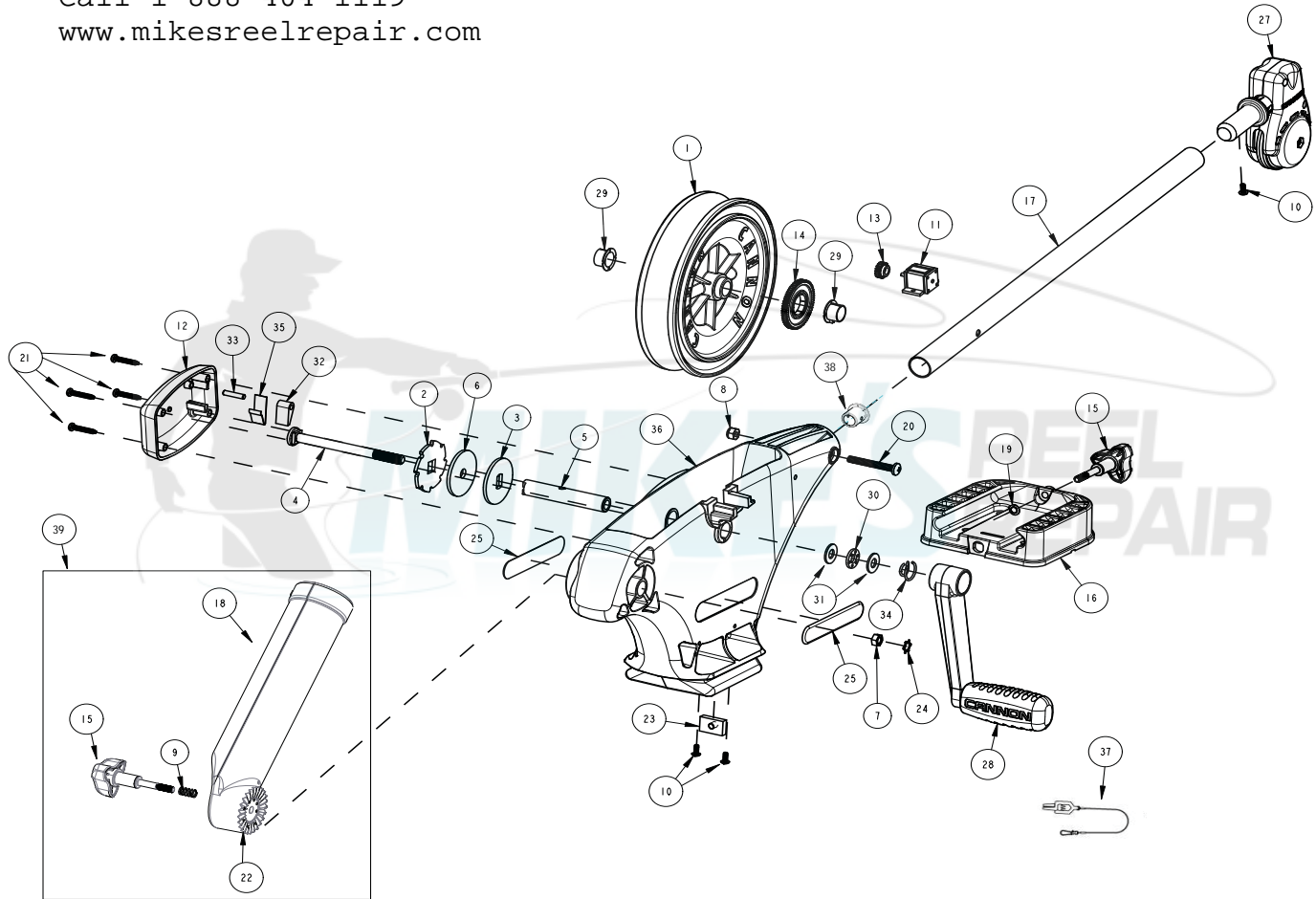


# 1901021 EASI-TROLL ST / E

For Parts & Service  
Call 1-888-404-1119  
[www.mikesreelrepair.com](http://www.mikesreelrepair.com)



# 1901021 EASI-TROLL ST / E

For Parts & Service  
Call 1-888-404-1119  
[www.mikesreelrepair.com](http://www.mikesreelrepair.com)

1	3397904	REEL ROUGH	16	3391955	BASE-MOUNT, MAG ST	31	3391737	WASHER THRUST, 17-7 SS (qty:2)
2	3391995	PLATE-RATCHET BRAKE	17	3392017	BOOM, MANUAL, DOWNRIGGER	32	9100160	DOG RATCHET
3	3391990	PLATE - CLUTCH/BRAKE REEL	18	3392033	TUBE, DUAL AXIS RD HLDR	33	9250003	HDW PIN 3/16 X 7/8 DOWEL
4	1000904	ASY SHAFT RATCHET UT6	19	3393000	RING, RETAINING, 1/4" SHAFT	34	9400040	HDW SPRING CRANK
5	1080001	SHAFT REEL ET/UT	20	3393461	SCREW-1/4-20 X 2" SS, PPH	35	9400070	HDW SPRING DOG
6	3391710	PAD-CLUTCH	21	3393480	SCREW-#10-1" PPH HI-LO SS (qty: 4)	36	3392540	FRAME, MANUAL DR, BLACK
7	3393130	NUT-HEX 1/4-20 SS, RIE COATED	22	3392033	ROD HOLDER, DUAL AXIS SLEEVE	37	2277002	LINE RELEASE
8	2263103	NUT-1/4-20 NYLOCK SS	23	3394702	INSERT, BASE, LO-PRO	*	2294894	BAG ASSEMBLY
9	2287002	HDW SPRING RELEASE PIN	24	3394722	INSERT, PUSH ON	38	3395906	ADAPTER, BOOM END
10	2373450	SCREW-#8-18 X 3/8" THRD CUT SS (qty:3)	25	3395634	DECAL-SIDE, BLACK	39	3391906	ASSY-CNN, ROD HOLDER, ET
11	3320011	COUNTER 3 DIGIT (METRIC)	26	3395906	ADAPTER, BOOM END			
12	3321001	COVER-CLUTCH	27	3990200	ASSY-CNN, BOOM END			
13	3392227	GEAR COUNTER (METRIC)	28	3994210	CRANK ARM/HANDLE ASM			
14	3392226	GEAR REEL (METRIC)	29	9010001	BEARING NYLINER			
15	3390101	KNOB-CANNON, SOFT GRIP (qty:2)	30	9010280	HDW BEARING, THRUST			

\*bag assembly not shown in diagram