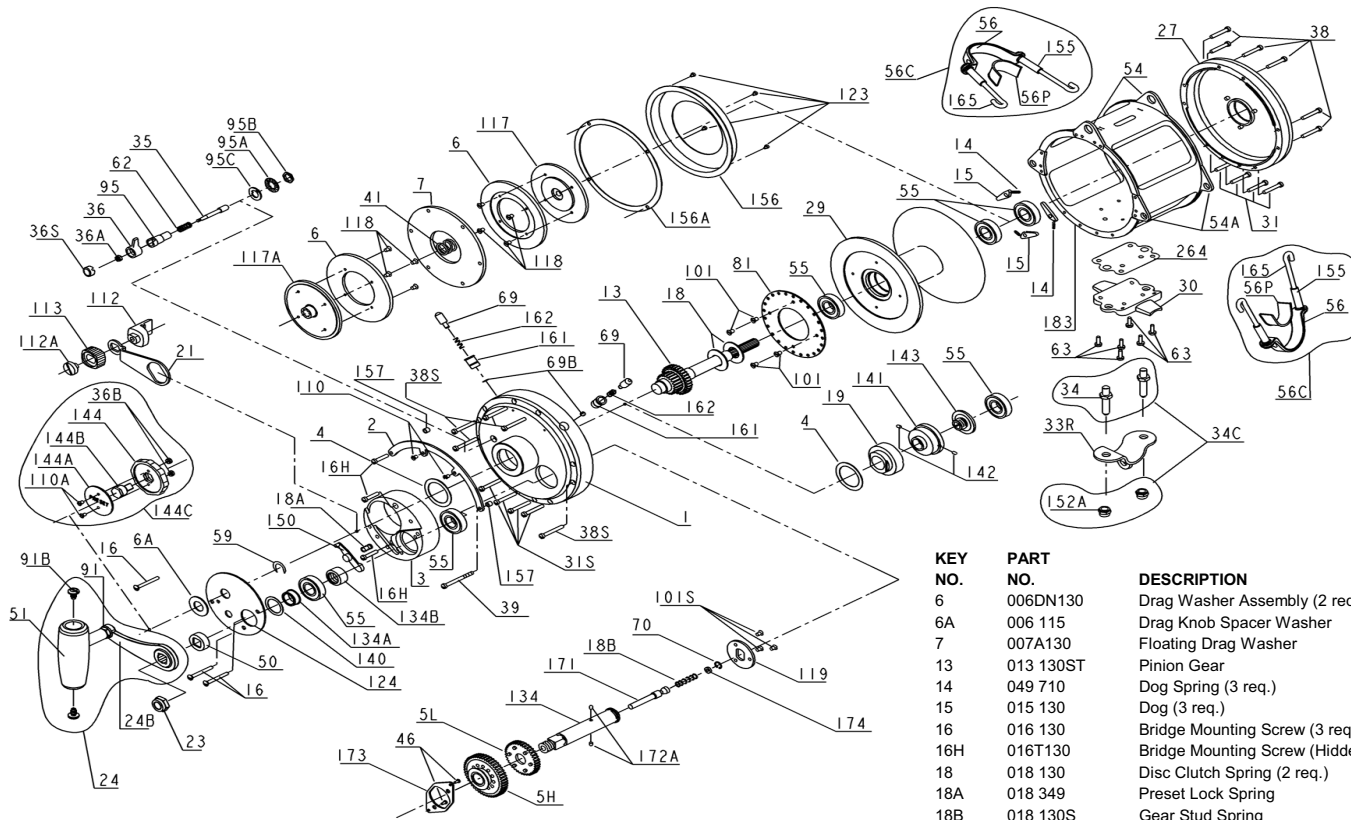




PARTS LIST FOR MODEL 130ST



KEY NO.	PART NO.	DESCRIPTION
1	001 130ST	R.S. Plate Assembly
2	002 130	Quadrant Ring
3	003 130ST	Bridge
4	004 130	Cam Thrust Washer
5H	005 130HS	Main Gear High Speed
5L	005 130LS	Main Gear Low Speed

KEY NO.	PART NO.	DESCRIPTION
6	006DN130	Drag Washer Assembly (2 req.)
6A	006 115	Drag Knob Spacer Washer
7	007A130	Floating Drag Washer
13	013 130ST	Pinion Gear
14	049 710	Dog Spring (3 req.)
15	015 130	Dog (3 req.)
16	016 130	Bridge Mounting Screw (3 req.)
16H	016T130	Bridge Mounting Screw (Hidden) (3 req.)
18	018 130	Disc Clutch Spring (2 req.)
18A	018 349	Preset Lock Spring
18B	018 130S	Gear Stud Spring
19	019 130	Eccentric Cam
21	021 130ST	Eccentric Lever
23	023 130	Handle Nut
24	024 130ST	Handle Complete
24B	024 130	Handle Blank (Only)
27	027 130ST	L.S. Plate Assembly
29	029L130	Spool
30	030 130ST	Stand
31	031T130	Stand Screw Left Side (4 req.)
31S	031T130S	Stand Screw Right Side (4 req.)
33R	033 130ST	Ringed Rod Clamp
34	034 130ST	Clamp Screw (2 req.)
34C	034C130ST	Rod Clamp Screw w/Nut
35	035 130SN	Click Tongue
36	036N050	Click Button
36A	036 700	Click Button Nut
36B	036 700	Preset Knob Nut (2 req.)
36S	036S080ST	Click Button Cap
38	038T130	Post Screw Left Side (6 req.)
38S	038T130S	Post Screw Right Side (5 req.)
39	039T130S	Long Quadrant Spring
41	041 130	L.S. Bearing Spring
46	046A704	Screw (5 req.)

KEY NO.	PART NO.	DESCRIPTION
50	050 130S	Shield
51	051 130ST	Handle Knob Assembly
54	054 130	Harness Lug (2 req.)
54A	054A130	Rod Brace Lug (4 req.)
55	055 130	Ball Bearing (6 req.)
56	056 130	Rod Brace (2 req.)
56C	056C130ST	Rod Brace Assembly
56P	056P117	Rod Brace Pad (2 req.)
59	059 130ST	Slotted Washer
62	062 050	Click Spring
63	063 030T	Stand Screw (6 req.)
69	069 130	Locating Pin (2 req.)
69B	069B130	Retaining Ring (2 req.)
70	069B130S	Retaining Ring
81	081 130	Ratchet
91	091 130ST	Handle Shaft
91B	091B130ST	Handle Knob Screw (2 req.)
95	095 070	Click Tongue Bushing
95A	095A020	Click Bushing Washer
95B	038 710	Click Bushing Nut
95C	095A050	Click Bushing Washer
101	101 050	Screw - Ratchet (4 req.)
101S	101 130S	Screw - Coupling Plate (3 req.)
110	110T050	Quadrant Center Screw (2 req.)
110A	110 050	Preset Plate Screw (2 req.)
112	112 130	Eccentric Lever Knob
112A	112A130	Eccentric Knob Screw
113	113 130	Eccentric Lever Cap
117	117 130	Drive Plate (Outer)
117A	117A130	Drive Plate (Inner)
118	118 080S	Drive Plate Screw (8 req.)
119	119 130S	Coupling Plate
123	123 050	Drag Cover Screw (4 req.)
124	124 130ST	Bridge Cover
*	125 130ST	Cam Housing
134	134 130S	Gear Stud
134A	134A130S	Indicator Bushing
134B	134B130S	Bearing Spacer Bushing
140	004 030	Thrust Washer
141	141 130ST	Cam Follower
142	142 130	Cam Follower Pin (2 req.)
143	143 130ST	Adjusting Screw
144	144 130ST	Preset Knob
144A	144A130ST	Preset Knob Plate
144B	144B130ST	Preset Knob Insert
144C	144C130ST	Preset Knob Assembly Complete
150	150 130ST	Preset Lock Button
152A	152A080T	Acorn Nut
155	155 130	Rod Brace Nut (4 req.)
156	156 130	Drag Cover
156A	156A130	Drag Cover Seal
157	157 130	Quadrant Spacer Bushing (2 req.)
161	161 130	Locating Pin Bushing (2 req.)
162	162 130	Locating Pin Spring (2 req.)
165	165 130	Hook Screw R.H. (4 req.)
171	171 130S	Plunger
172A	172A130S	Plunger Pin (2 req.)
173	173 130S	Gear Retainer
174	174 130S	Gear Stud Plug
183	183 130ST	Frame
264	264 130ST	Stand Gasket