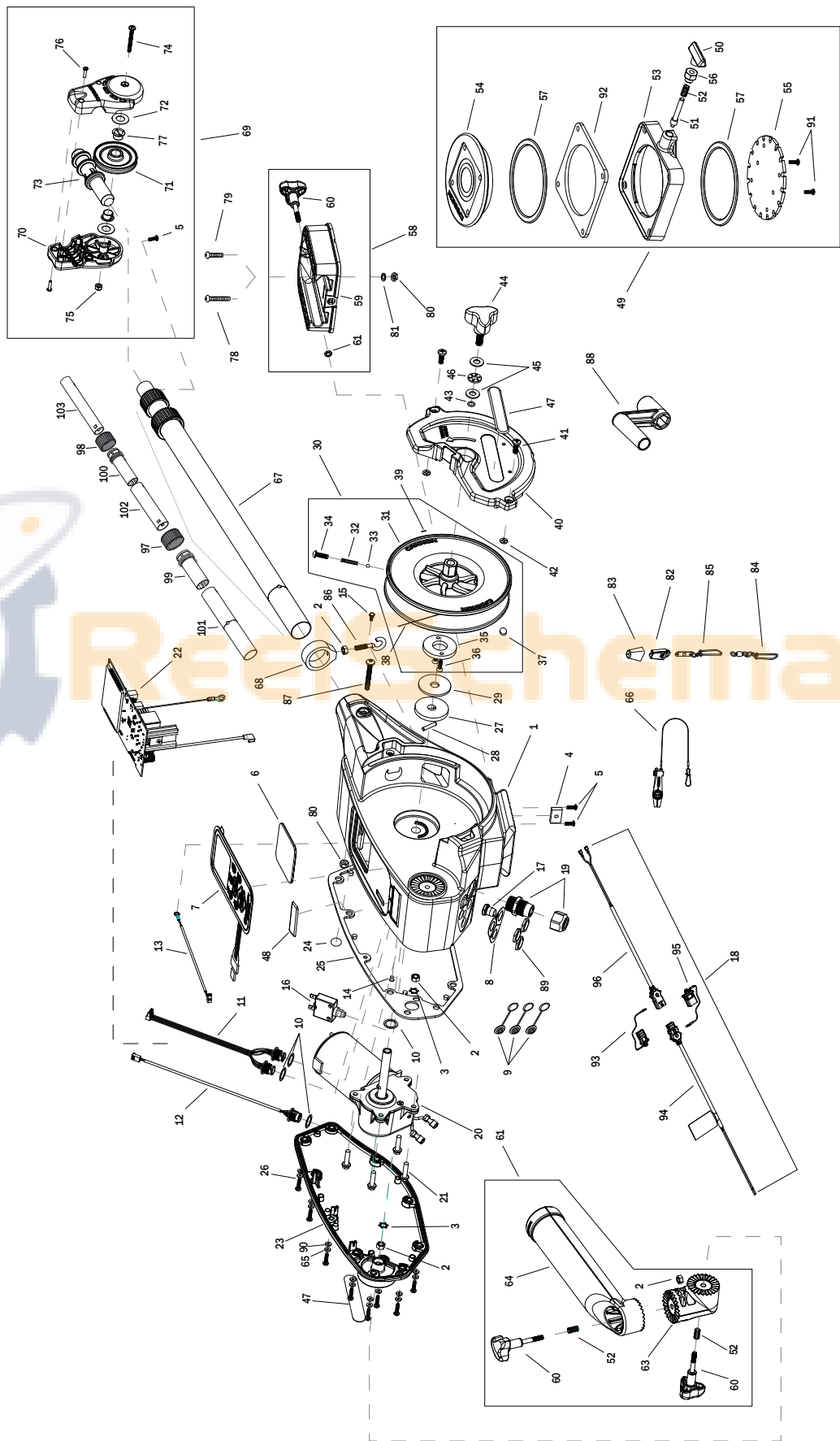


PARTS DIAGRAM

DIGI-TROLL 10 ELECTRIC DOWNRIGGER

This page provides Cannon® WEEE compliance disassembly instructions. For more information about where you should dispose of your waste equipment for recycling and recovery and/or your European Union member state requirements, please contact your dealer or distributor from which your product was purchased.

Tools required, but not limited to: flat head screw driver, Phillips screw driver, socket set, pliers, wire cutters.



PARTS LIST

ITEM	QTY	PART NUMBER	DESCRIPTION
1	1	3392524	FRAME, RAW
*2	4	3393130	NUT-HEX 1/4-20 SS 300SRS
3	1	3394722	INSERT, PUSH ON
4	1	3394702	INSERT, BASE
5	2	2373450	SCREW-#8-18 X 3/8 THD (SS)
6	1	3396510	LENS-WINDOW
7	1	3394019	KEYPAD, DIGI-TROLL 10
8	1	3396603	SEAL PLATE, DTIO
9	2	700176	CON XCAP MINI-CON PANEL MOUNT
10	2	3391730	WASHER, SEAL, DATA
11	1	3391220	HARNESS, COMM
12	1	3391221	HARNESS, TRANSDUCER
16	1	3398205	CIRCUIT BREAKER, 25 AMP
17	1	1221491	BOOT CIRCUIT BREAKER
18	1	3993220	ASSY, POWER CABLE, RETRO(SUB)
19	1	3392920	STRAIN-RELIEF, HEYCO M4502
20	1	3996515	MOTOR/GEAR HOUSING ASSY
21	1	3393411	SCREW-FLANGE HEX HI-LO
22	1	3394008	ASY PCA,DIGI-TRLL 10,10TS
23	1	3390203	COVER, MOTOR
24	1	4019663	MIC VENT,PTFE LU LRA MATERIAL
25	1	3396902	GASKET, COVER
26	11	3393480	SCREW-#10X.75"PPH HI-LO SS
27	1	3391907	PLATE, CLUTCH SHAFT
28	1	3392640	PIN, DRIVESHAFT
30	1	3391711	PAD, CLUTCH
31	1	3777927	REEL, ROUGH, 3.75" OD
32	1	3392707	SPRING, REEL
33	1	3396020	BALL BEARING, REEL
34	1	3393474	SCREW-DRIVE #14 X .75" SS
35	1	3391906	PLATE, CLUTCH REEL
36	1	3393418	SCREW-#10-16X.75"HI-LO SS
37	4	1459666	CERAMIC MAGNET P/N 42-B-5020
38	1	3775397	400' CABLE
39	1	9100070	CON LEADER SLEEVE
40	1	3390205	COVER, REEL
41	2	2373434	SCREW-1/4-20 X 3/4 SS PPMS
42	2	2071718	WASHER #10 NYLON RETAINING
43	1	3394605	O-RING, KNOB
44	1	3390103	KNOB, SOFT GRIP, CLUTCH
45	1	3391737	HDW WASHER, THRUST
46	1	9010280	HDW BEARING, THRUST
47	2	3395634	DECAL- SIDE, BLACK
48	1	3395710	DECAL-PIC BLACK
*49	1	3991913	CNN ASY, SWIVEL BASE
*50	1	2249001	HDW KNB RELEASE PIN
*51	1	3392600	PIN - RELEASE
*52	1	2287002	HDW SPRING RELEASE PIN
*53	1	3391923	BASE, SWIVEL MOLDED
*54	1	3394630	TOP, SWIVEL MOLDED

ITEM	QTY	PART NUMBER	DESCRIPTION
*55	1	3391919	PLATE, INDEX TS
*56	1	2277001	HDW RETAINER RELEASE NUT
57	1	9010004	HDW BEARING SWIVEL BASE
*58	1	3991930	ASY, MNT BASE DT/MAG(SUB)
*59	1	3391955	BASE-MOUNT, MAG ST
*60	3	3390101	KNOB-CANNON, SOFT GRIP
61	1	3393000	RING, RETAINING, 1/4" SHAFT
*62	1	3991904	ASSY-CNN, ROD HOLDER
*63	1	3394200	ARM, DUAL AXIS-ROD HOLDER
64	1	3392033	TUBE, DUAL AXIS RD HLDR
65	11	3394602	WASHER, FLAT #8, SS
66	1	2277002	ASY HDW RELEASE UNIVERSAL
67	1	2210821	ASY BOOM TELESCOPIC
68	1	3397900	BALL HOOK EXTRUSION
*69	1	3990200	ASSY-CNN, BOOM END (SUB)
70	1	3392520	CASE, PULLEY
*71	1	3392300	SHEEVE, PULLEY
*72	1	3391507	SHIM, BOOM END
*73	1	3392013	BOOM END, NEW
*74	1	3393485	SCREW-#10-24X1.75 PPHMS S
*75	1	3393124	NUT-#10-32 NYLOCK 18-8 SS
*76	1	2303412	SCREW-#6-20 X 5/8 SELF TAP
*77	1	3390005	BEARING-NYLINER, #8L5-1/2-F
*78	1	9280720	HDW SCR 1/4 20X2 TRUSS HD PHIL
*79	1	9280713	HDW SCR 1/4 20X1 1/2 TRUSS HEA
*80	1	2263103	NUT-1/4-20 NYLOCK SS
*81	1	2371712	WASHER-FLAT 9/32 X 5/8 X 1/16
*82	1	9100100	CON TERMINATOR
*83	1	9100101	CUSHION SLEEVE TERMINATOR
*84	1	9100620	HDW SNAP SWIVEL 4/0-37 MARLIN
*85	1	2200148	ASY SNAP & INSULATOR
*86	1	9040040	HDW BOLT 1/4-20 ROLLEDTHD HOOK
*87	1	3393461	SCREW-1/4-20 X 2" SS, PPH
*88	1	3390910	HANDLE-CRANK, MANUAL
*89	1	3393113	NUT, HEX, MINI-CON-X
*90	11	3391732	WASHER, SEALING
*91	2	2372100	SCREW, #8-18 X 5/8
*92	1	3391958	PLATE, SUPPORT TOP
*93	1	3393210	CAP ASSY, POWER CABLE, MOTOR
*94	1	3393200	CABLE-POWER, BATTERY
*95	1	3393201	CAP ASSY, POWER CABLE, BATTERY
*96	1	3393222	CABLE-POWER, MOTOR, RETRO
*97	1	2219822	HDW CLAMP BASE TUBE NEW
*98	1	2219823	HDW CLAMP BASE INTER TUBE NEW
*99	1	3393300	COLLET - BASE TUBE
*100	1	3393301	COLLET - MID TUBE
*101	1	2290828	24" BOOM - HEAVY DUTY
*102	1	2290829	ASY TUBE BOOM INTER BLK
*103	1	2290830	ASY TUBE BOOM END BLK
■	1	3994807	BAG ASSEMBLY (INCLUDES 72-90)

■ THIS ITEM IS PART OF AN ASSEMBLY.

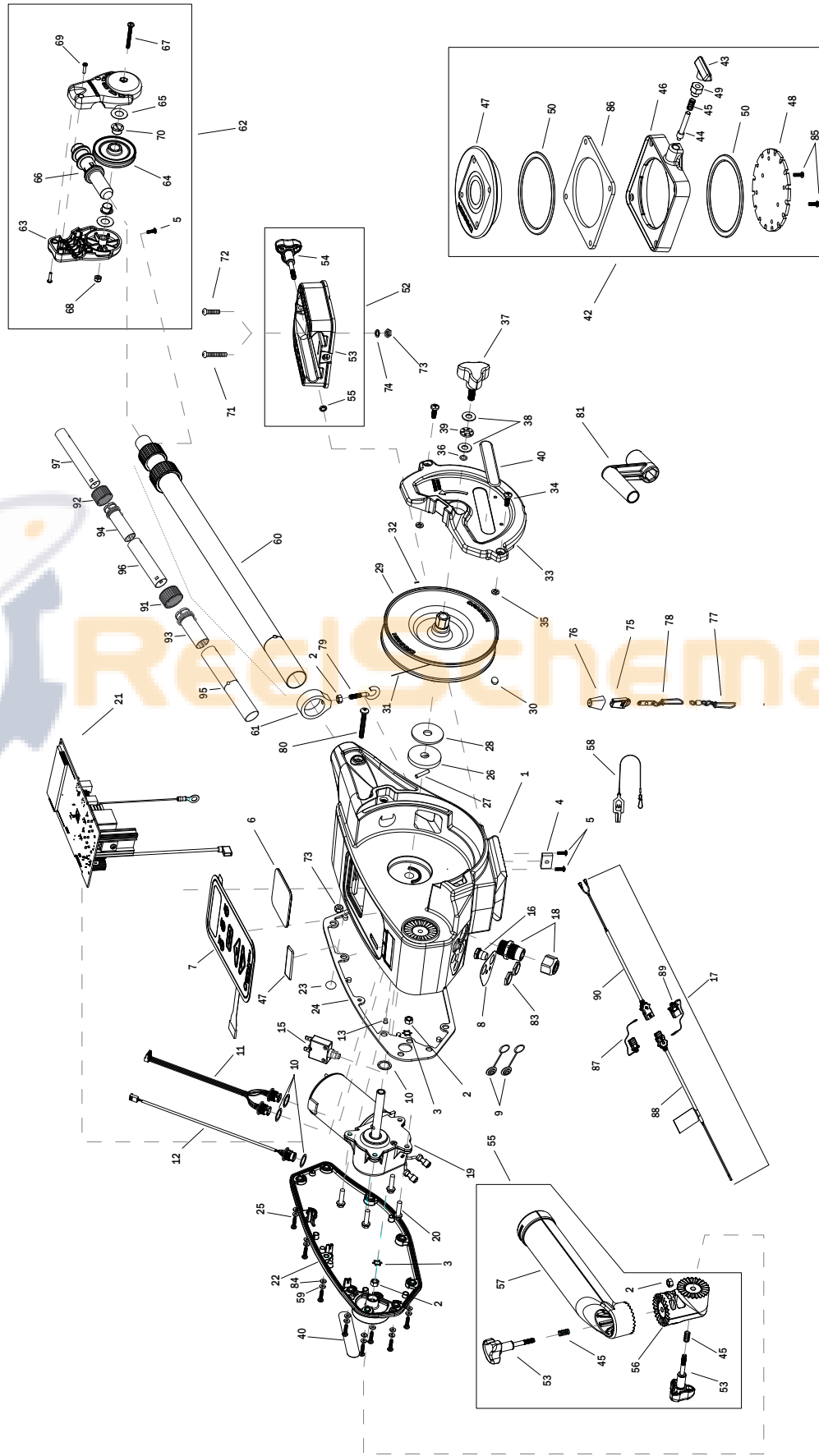
* THIS ITEM IS PART OF A KIT AND ONLY LISTED FOR VIEWING PURPOSES.

PARTS DIAGRAM

DIGI-TROLL 10 TS ELECTRIC DOWNRIGGER

This page provides Cannon® WEEE compliance disassembly instructions. For more information about where you should dispose of your waste equipment for recycling and recovery and/or your European Union member state requirements, please contact your dealer or distributor from which your product was purchased.

Tools required, but not limited to: flat head screw driver, Phillips screw driver, socket set, pliers, wire cutters.



PARTS LIST

ITEM	QTY	PART NUMBER	DESCRIPTION	ITEM	QTY	PART NUMBER	DESCRIPTION
1	1	3392525	FRAME, TS	*50	1	9010004	HDW BEARING SWIVEL BASE
*2	4	3393130	NUT-HEX 1/4-20 SS 300SRS	51	1	3991930	ASY. MNT BASE DT/MAG(SUB)
3	1	3394722	INSERT, PUSH ON	52	1	3391955	BASE-MOUNT, MAG ST
4	1	3394702	INSERT, BASE	*53	1	3390101	KNOB-CANNON, SOFT GRIP
5	2	2373450	SCREW-#8-18 X 3/8 THD (SS)	*54	1	3393000	RING, RETAINING, 1/4" SHAFT
6	1	3396510	LENS-WINDOW	*55	1	3991904	ASSY-CNN, ROD HOLDER
7	1	3394019	KEYPAD, DIGI-TROLL 10	*56	1	3394200	ARM, DUAL AXIS-ROD HOLDER
8	1	3396603	SEAL PLATE, DT10	*57	1	3392033	TUBE, DUAL AXIS RD HLDR
9	2	700176	CON XCAP MINI-CON PANEL MOUNT	58	1	2200109	SALTWATER RELEASE
10	2	3391730	WASHER, SEAL, DATA	59	11	3394602	WASHER, FLAT, #8, SS
11	1	3391220	HARNESS, COMM	60	1	3392010	ASY BOOM TELESCOPIC, SS
12	1	3391221	HARNESS, TRANSDUCER	61	1	3397900	BALL HOOK EXTRUSION
13	1	1234002	HDW INSERT SS PRESS 1/4IN(SUB)	62	1	3990200	ASSY-CNN, BOOM END (SUB)
15	1	3398205	CIRCUIT BREAKER, 25 AMP	*63	1	3392520	CASE, PULLEY
16	1	1221491	BOOT CIRCUIT BREAKER	*64	1	3392300	SHEEVE, PULLEY
17	1	3993220	ASSY, POWER CABLE, RETRO(SUB)	*65	1	3391507	SHIM, BOOM END
18	1	3392920	STRAIN-RELIEF, HEYCO M4502	*66	1	3392013	BOOM END, NEW
19	1	3996515	MOTOR/GEAR HOUSING ASSY	*67	1	3393485	SCREW-#10-24X1.75 PPHMS S
20	4	3393411	SCREW-FLANGE HEX HI-LO	*68	1	3393124	NUT-#10-32 NYLOK 18-8 SS
21	1	3394008	ASY PCA.DIGI-TRLL 10.10TS	*69	1	2303412	SCREW-#6-20 X 5/8 SELF TAP
22	1	3390204	COVER, MOTOR, TS	*70	1	3390005	BEARING-NYLINER, #8L5-1/2-F
23	1	401966-3	MIC VENT.PTFE LU LRA MATERIAL	*71	1	9280720	HDW SCR 1/4 20X2 TRUSS HD PHIL
24	1	3396902	GASKET, COVER	*72	1	9280713	HDW SCR 1/4 20X1 1/2 TRUSS HEA
25	11	3393480	SCREW-#10X.75"PPH HI-LO SS	*73	1	2263103	NUT-1/4-20 NYLOCK SS
26	1	3391907	PLATE, CLUTCH SHAFT	*74	1	2371712	WASHER-FLAT 9/32 X 5/8 X 1/16
27	1	3392640	PIN, DRIVESHAFT	*75	1	9100100	CON TERMINATOR
28	1	3391711	PAD, CLUTCH	*76	1	9100101	CUSHION SLEEVE TERMINATOR
29	1	3777908	REEL, ROUGH, 3.75" OD, SS	*77	1	9100620	HDW SNAP SWIVEL 4/0-37 MARLIN
30	4	1459666	CERAMIC MAGNET P/N 42-B-5020	*78	1	2200148	ASY SNAP & INSULATOR
31	1	3775397	400' CABLE	*79	1	9040040	HDW BOLT 1/4-20 ROLLEDTHD HOOK
32	1	9100070	CON LEADER SLEEVE	*80	1	3393461	SCREW-1/4-20 X 2" SS, PPH
33	1	3390206	COVER, REEL, TS	*81	1	3390910	HANDLE-CRANK, MANUAL
34	2	2373434	SCREW-1/4-20 X 3/4 SS PPMs	*83	1	3393113	NUT, HEX, MINI-CON-X
35	2	2071718	WASHER #10 NYLON RETAINING	*84	11	3391732	WASHER, SEALING
36	1	3394605	O-RING, KNOB	*85	2	2372100	SCREW, #8-18 X 5/8
37	1	3390103	KNOB, SOFT GRIP, CLUTCH	*86	1	3391958	PLATE, SUPPORT TOP
38	1	3391737	HDW WASHER, THRUST	*87	1	3393210	CAP ASSY, POWER CABLE, MOTOR
39	1	9010280	HDW BEARING, THRUST	*88	1	3393200	CABLE-POWER, BATTERY
40	2	3395634	DECAL- SIDE, BLACK	*89	1	3393201	CAP ASSY, POWER CABLE, BATTERY
41	1	3395711	DECAL-PIC TS	*90	1	3393222	CABLE-POWER, MOTOR, RETRO
42	1	2998905	CNN ASY, SWIVEL BASE	*91	1	2219822	HDW CLAMP BASE TUBE NEW
*43	1	2249001	HDW KNB RELEASE PIN	*92	1	2219823	HDW CLAMP BASE INTER TUBE NEW
*44	1	3392600	PIN - RELEASE	*93	1	3393300	COLLET - BASE TUBE
*45	1	2287002	HDW SPRING RELEASE PIN	*94	1	3393301	COLLET - MID TUBE
*46	1	3391923	BASE, SWIVEL MOLDED	*95	1	3392001	TUBE, BOOM, BASE, SS
*47	1	3394630	TOP, SWIVEL MOLDED	*96	1	3392002	TUBE, BOOM, MID, SS
*48	1	3391919	PLATE, INDEX TS	*97	1	3392003	TUBE, BOOM, END, SS
*49	1	2277001	HDW RETAINER RELEASE NUT	■	1	3994807	BAG ASSEMBLY (INCLUDES 65-84)

■ THIS ITEM IS PART OF AN ASSEMBLY.

* THIS ITEM IS PART OF A KIT AND ONLY LISTED FOR VIEWING PURPOSES.