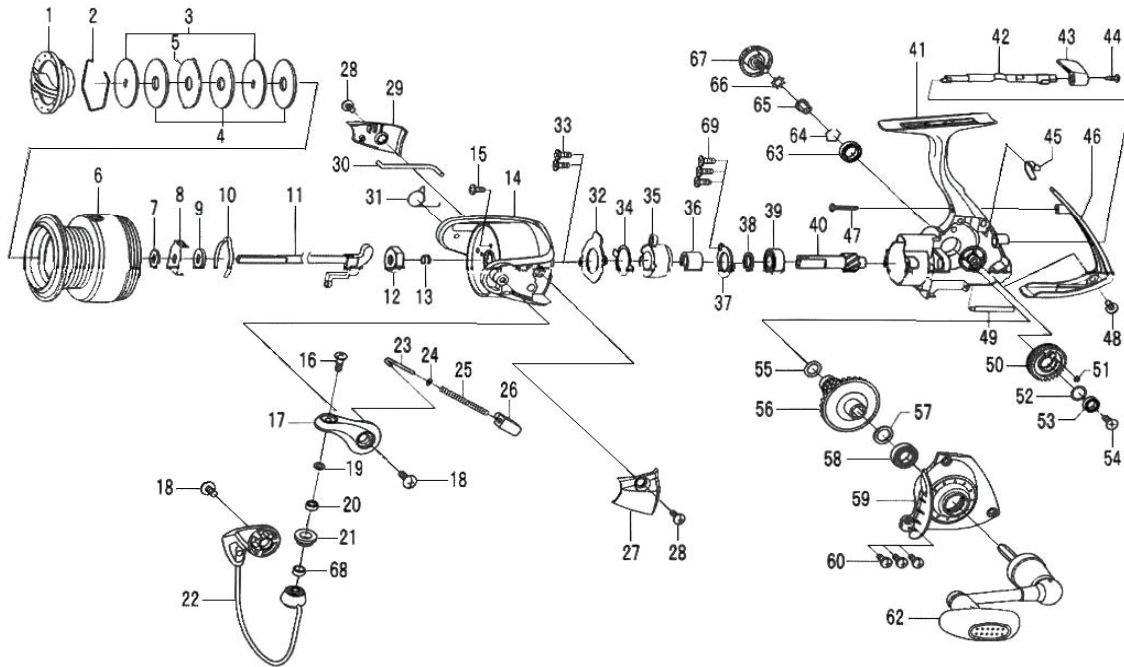


# SPINNING REEL **EXCELER 2500**



| Key No. | Parts No. | Parts Name               | Key No. | Parts No. | Parts Name         |
|---------|-----------|--------------------------|---------|-----------|--------------------|
| 1       | G70-0801  | DRAG KNOB                | 35      | G53-9201  | ROLLER CLUTCH      |
| 2       | F88-4001  | DRAG WASHER RET          | 36      | G71-6201  | SPACING SLEEVE     |
| 3       | G70-0601  | KEY WASHER               | 37      | G46-7402  | BEARING RET        |
| 4       | F69-1001  | DRAG WASHER              | 38      | 375-8509  | BEARING RET WASHER |
| 5       | G70-0701  | EARED WASHER             | 39      | G53-5101  | BALL BEARING B     |
| 2-6     | G70-0301  | SPOOL                    | 40      | G69-8901  | PINION GEAR        |
| 2-6     | G75-9701  | SPOOL (EXTRA)            | 41      | G69-8201  | BODY               |
| 7       | E46-7101  | SPOOL WASHER             | 42      | G69-8601  | A/R CAM            |
| 8       | G70-0001  | CLICK LEAF SPRING HOLDER | 43      | G69-9402  | A/R LEVER          |
| 9       | E24-6101  | CLICK LEAF SPRING WASHER | 44      | G69-9501  | A/R LEVER SCREW    |
| 10      | F70-4901  | SPOOL CLICK LEAF SPRING  | 45      | G72-6201  | A/R CAM SPRING     |
| 11      | G69-8701  | MAIN SHAFT               | 46      | G69-9301  | REAR COVER         |
| 12      | G69-9801  | ROTOR NUT                | 47      | E11-9602  | REAR COVER SCREW A |
| 13      | G69-9701  | ROTOR NUT COLLAR         | 48      | G33-2702  | REAR COVER SCREW B |
| 14      | G61-2010  | ROTOR                    | 49      | G61-0802  | STABILIZER BAR     |
| 15      | G62-7701  | ROTOR NUT LOCK SCREW     | 50      | G61-0201  | OSC GEAR           |
| 16      | G19-5602  | LINE ROLLER SCREW        | 51      | G46-6001  | O RING A           |
| 17      | G61-2310  | BAIL ARM                 | 52      | G46-6100  | OSC GEAR WASHER    |
| 18      | G20-5001  | BAIL ARM SCREW           | 53      | F05-5602  | BALL BEARING C     |
| 19      | F89-7101  | LINE ROLLER WASHER       | 54      | F20-6902  | OSC GEAR SCREW     |
| 20      | G28-1601  | BALL BEARING A           | 55      | G67-0501  | O RING B           |
| 21      | F62-5001  | LINE ROLLER              | 56      | G69-9001  | DRIVE GEAR         |
| 22      | G70-3401  | BAIL                     | 57      | 375-8500  | DRIVE GEAR WASHER  |
| 23      | G47-1801  | BAIL SPRING SHAFT        | 58      | G46-7302  | BALL BEARING D     |
| 24      | E31-3901  | BAIL SPRING WASHER       | 59      | G69-9101  | SIDE COVER         |
| 25      | G47-1701  | BAIL SPRING              | 60      | G33-2902  | SIDE COVER SCREW   |
| 26      | G61-2101  | BAIL SPRING HOLDER       | 62      | G69-9901  | HANDLE             |
| 27      | G61-2501  | BAIL SPRING COVER        | 63      | F01-6401  | BALL BEARING E     |
| 28      | G27-0801  | BAIL SPRING COVER SCREW  | 64      | G47-2401  | BALL BEARING RET   |
| 29      | G61-3201  | BAIL TRIP LEVER COVER    | 65      | F72-1001  | HANDLE COLLAR      |
| 30      | G61-3001  | BAIL TRIP LEVER          | 66      | 160-8101  | LOCK WASHER        |
| 31      | G61-3101  | BAIL TRIP LEVER SPRING   | 67      | G70-0201  | HANDLE SCREW       |
| 32      | G61-1201  | ROLLER CLUTCH RET        | 68      | F70-1801  | LINE ROLLER COLLAR |
| 33      | G55-7101  | ROLLER CLUTCH RET SCREW  | 69      | G55-7101  | BEARING RET SCREW  |
| 34      | G46-5401  | CLUTCH CAM RET           |         |           |                    |